

# Photography and the Book:

Henry Norman's glass negatives from the Royal Commonwealth Society Collections at Cambridge University Library



9/3/10

11

# Henry Norman (1858-1939)

An English Journalist and  
Politician

*Pall Mall Gazette*

- “Real Japan” (1892)
- “People and Politics of the Far East” (1895)

# Photography

- Daguerrotype (1837-)
- Calotype (negatives)(Henry Fox Talbot)
- Wet Plate (collodion process) (1850s-):long exposure time
- **Dry Plate** (gelatin process ) (1878-): shorter exposure time: 'instantaneous photographs'
- Roll film (Kodak)(1888-)
- Digital photography (late 1980s-)

# Printing (use of photography)

- Insertion of photographic prints
- Images copied by artists from photographs for printing plates (example : Line block process)
- Collotype (1870s-): a small number of copies
- **Halftone** (1890-): halftone screens: a large number of copies

- 
- (photomechanical processes means Halftone and Line block )

# “Real Japan”

“With the exception of three negatives kindly placed at my service by Professor W. K. Burton, of the Japanese Imperial University, almost all the illustrations are from photographs taken by myself. I have to thank Mr. Joseph Pennell and Mr. George Thomson for kind and accomplished help in making a number of them more suitable for mechanical reproduction”.



*“Deus inde ego.”*—HORACE, *Sat.* I., 8.

9/3/10

“Real Japan” (frontispiece)





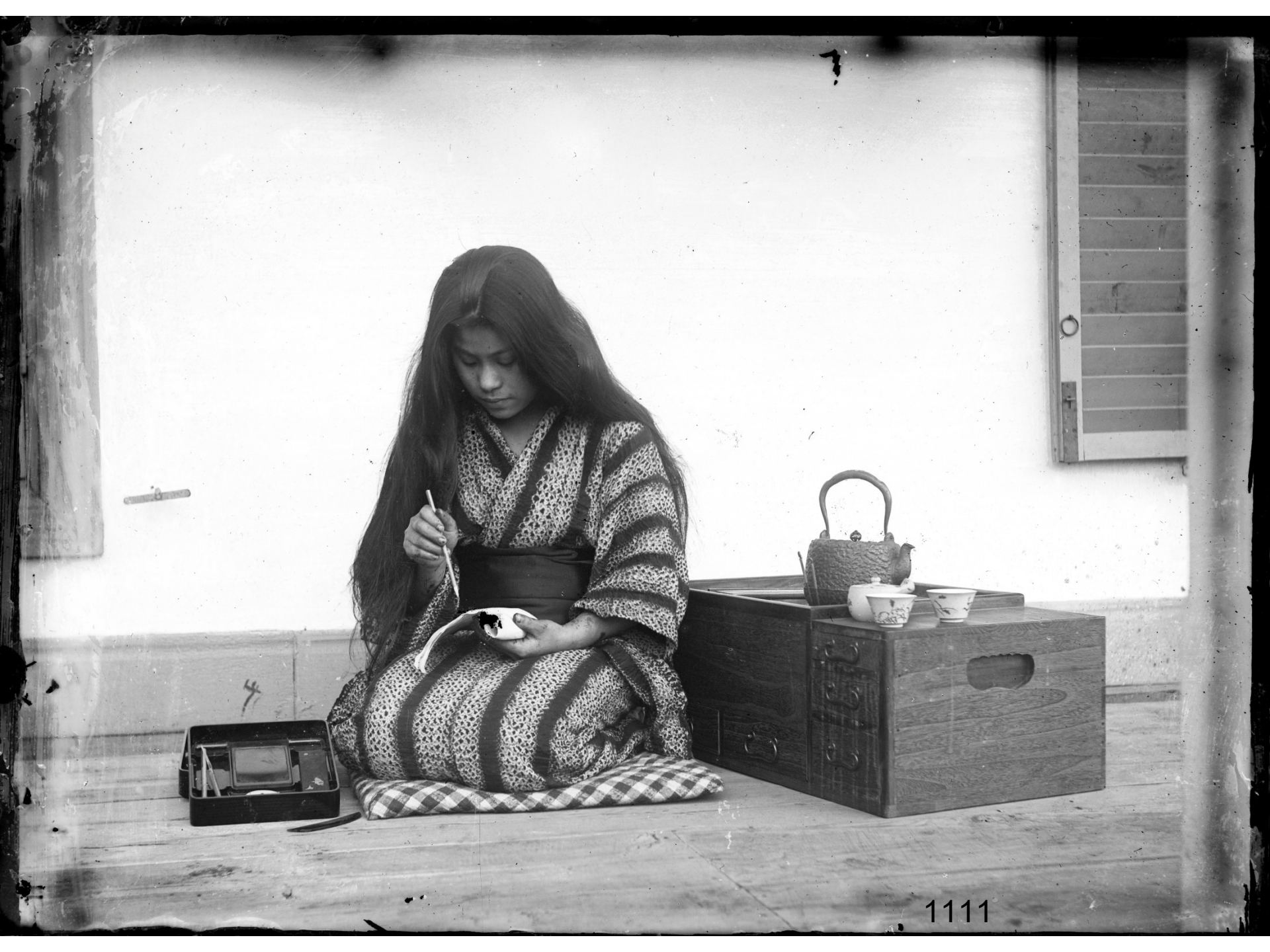






9/3/10

1010



1111



EN DESHABILLE.



1313





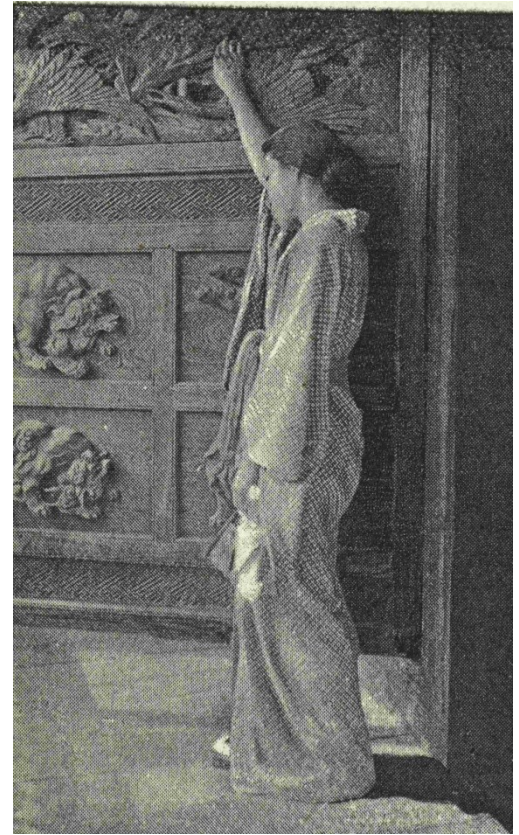






A TUNE ON THE MOON-FIDDLE.





1818



9/3/10

19 9



2020



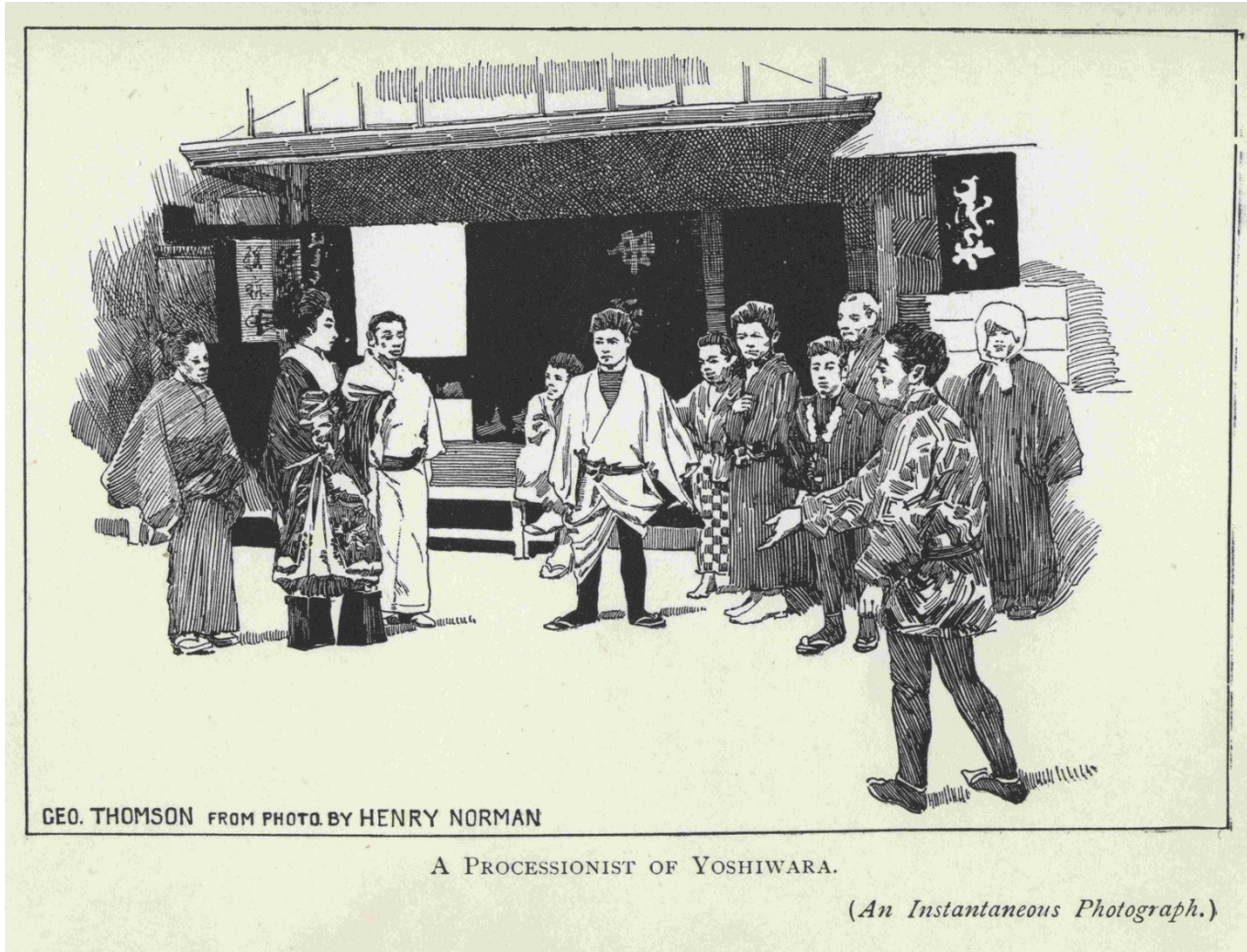
2121



IN MR. MORIOKA'S GARDEN.



2323



GEO. THOMSON FROM PHOTO BY HENRY NORMAN

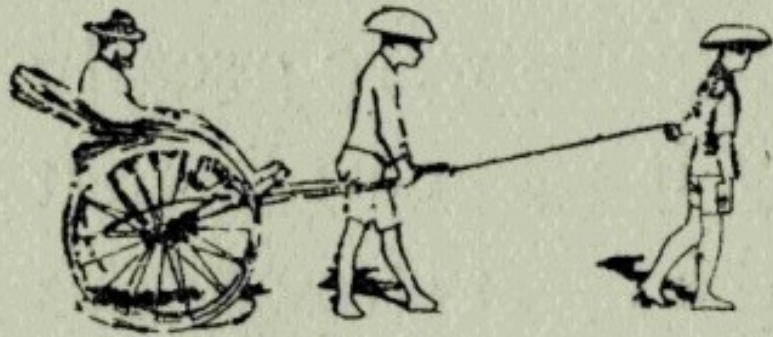
A PROCESSIONIST OF YOSHIWARA.

*(An Instantaneous Photograph.)*





*IN RURAL JAPAN: A RUSH TO A  
VOLCANO.*



ON the morning of the 16th  
of July, 1888, the appalling  
news reached Tōkyō that  
an enormous volcano had  
exploded somewhere in the north of Japan, killing



2727

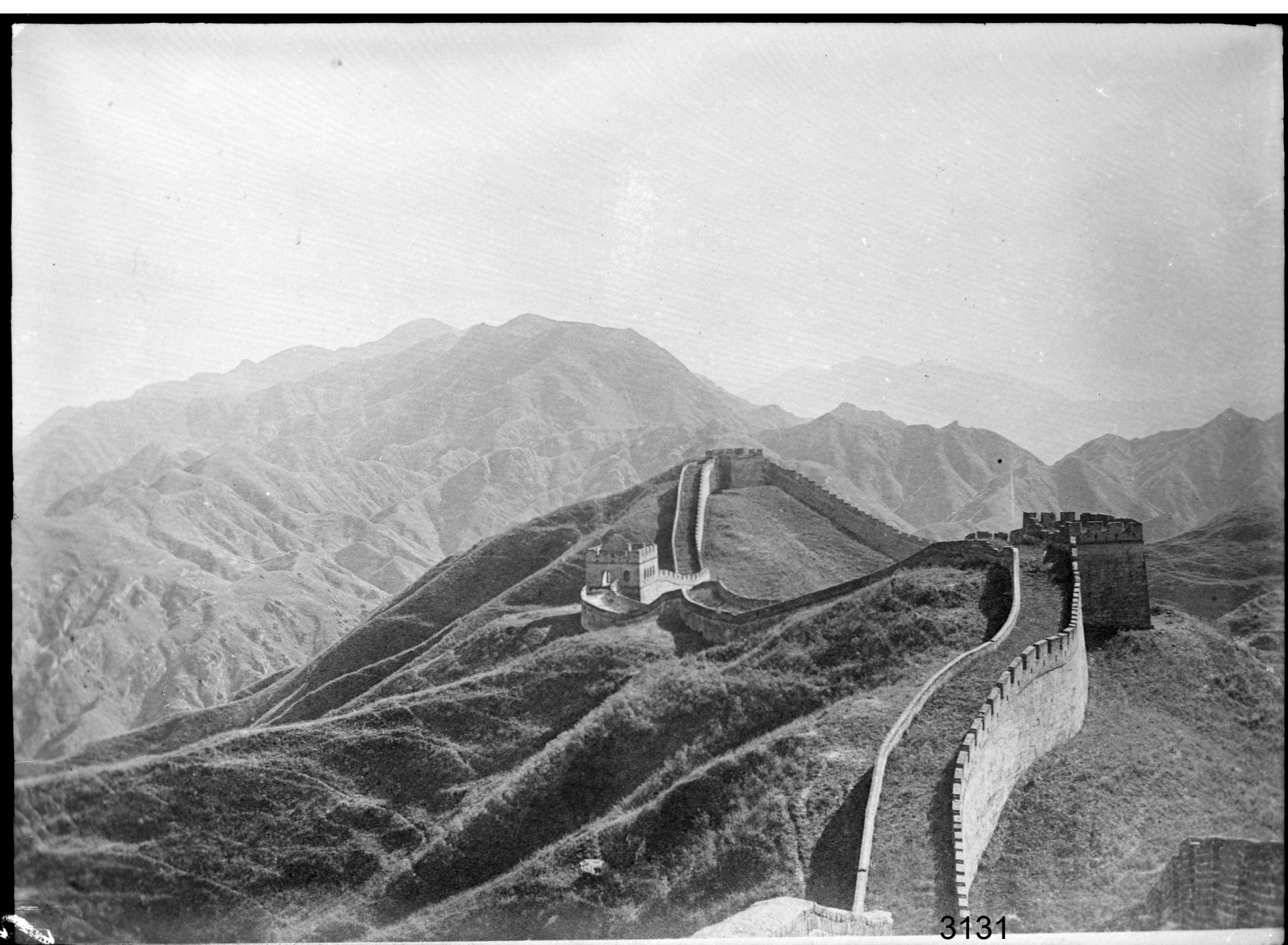




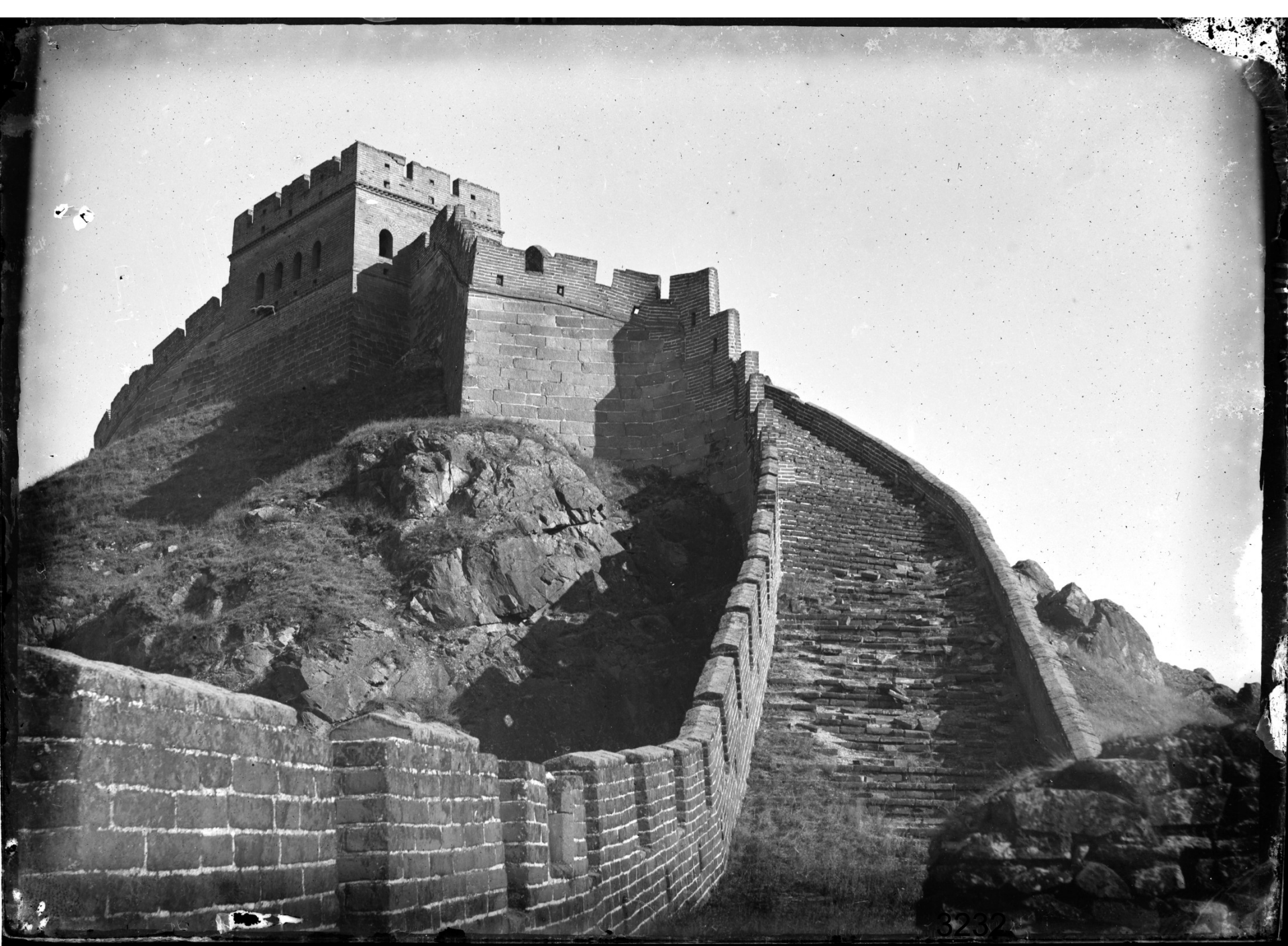
中外福



3030



3131



3232

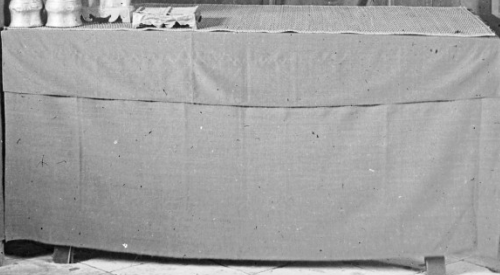


觀我聖



訓標四如長  
與無字辨

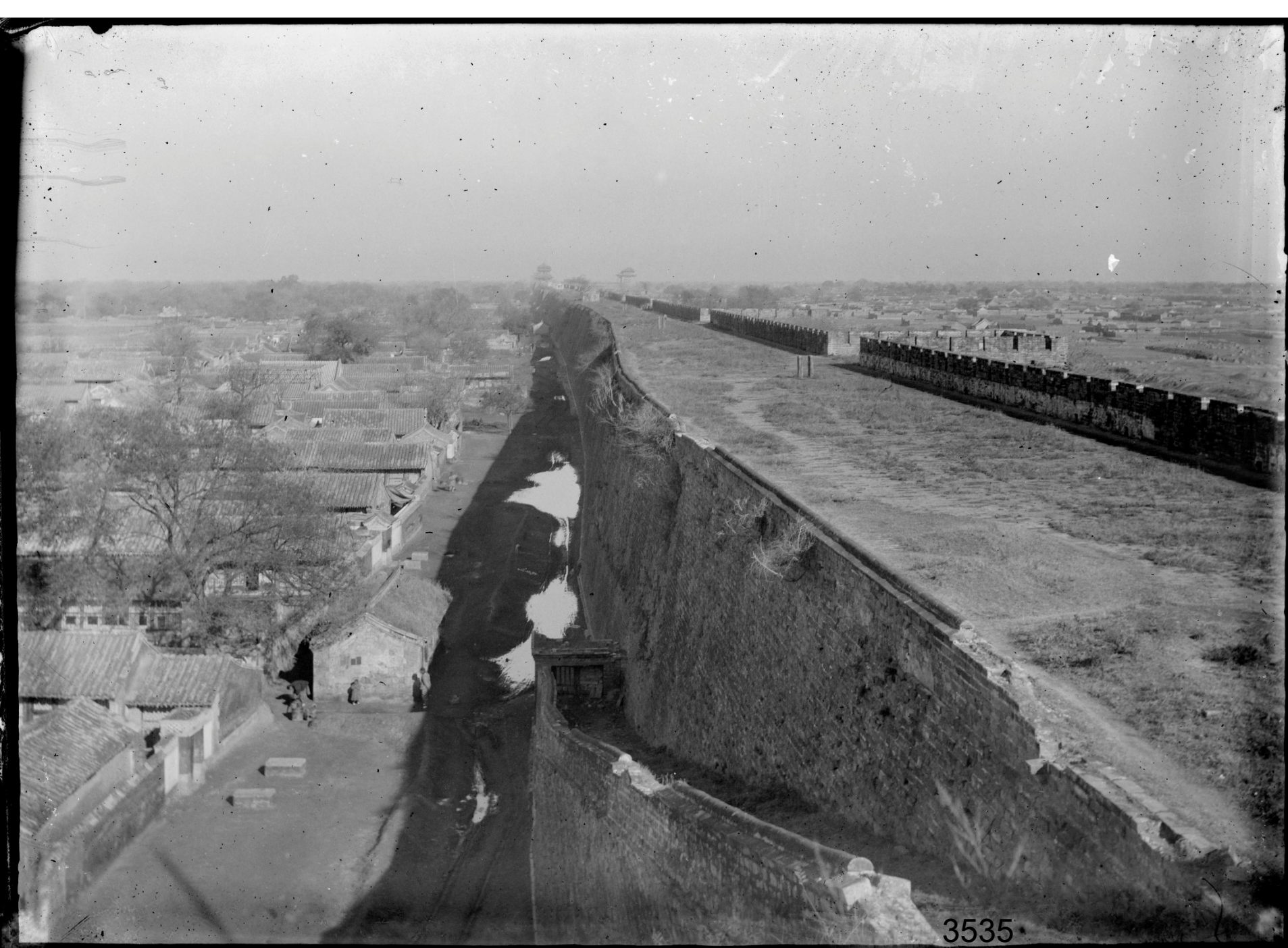
上慈  
慈  
廣瑞平昌德化月明



竟爾行在真境  
期異日慶重來



3434



3535



3636



3737

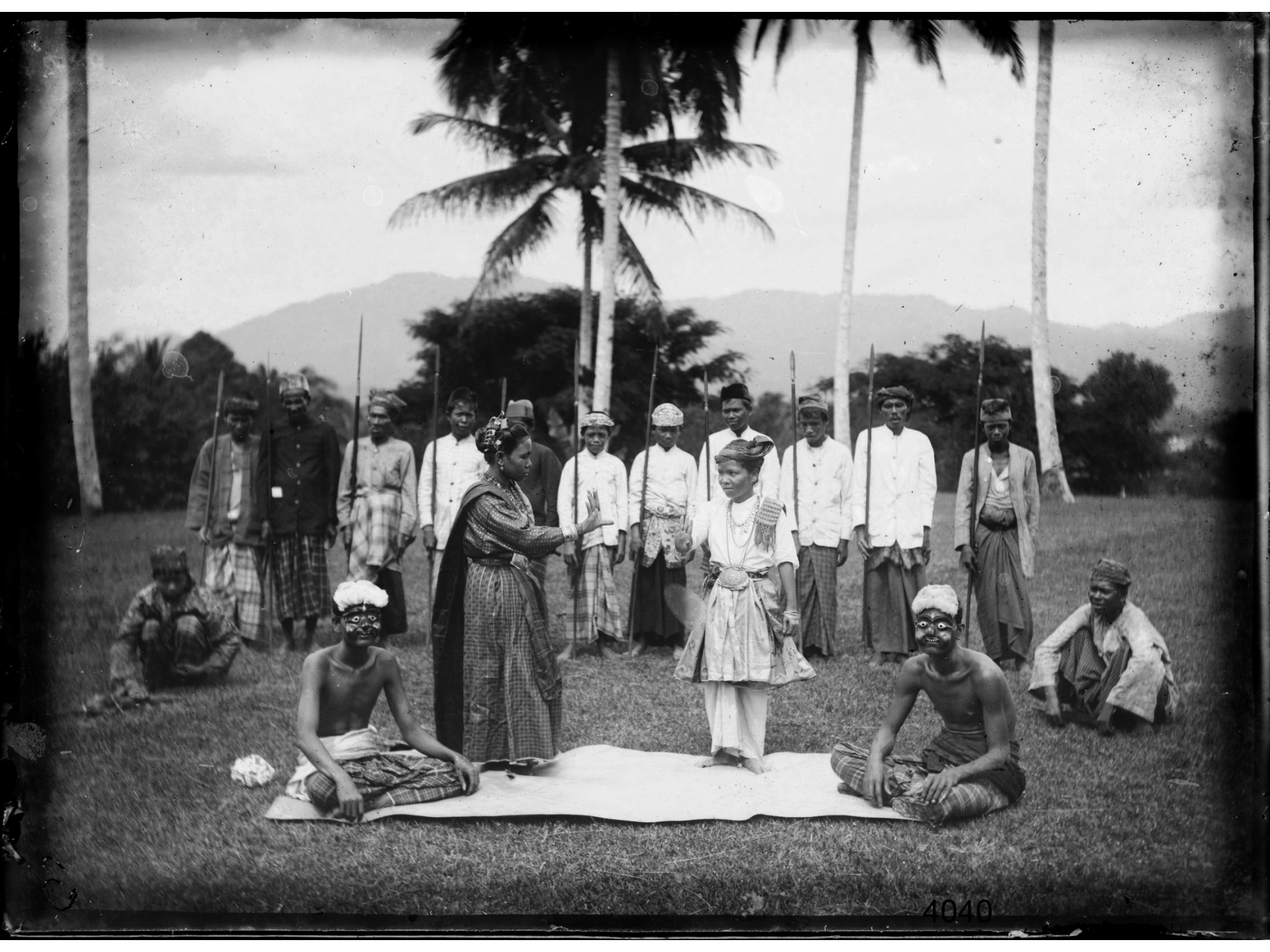


3838



9/3/10

3939









4242

