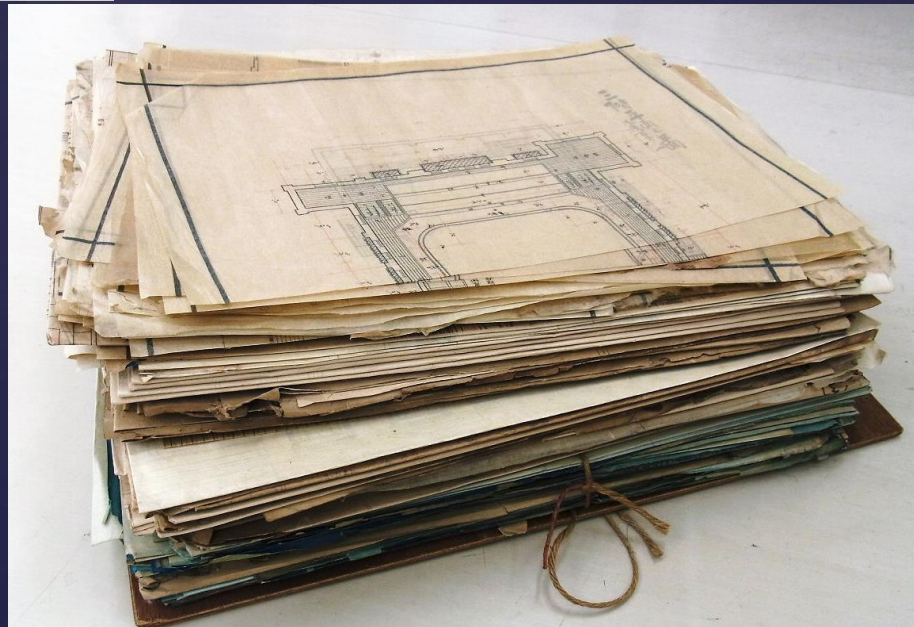


2014 EAJRS conference in Leuven

17 September

**Theater Recreation**  
**and**  
**a Stage Carpenter**  
*Nakamura Giemon*

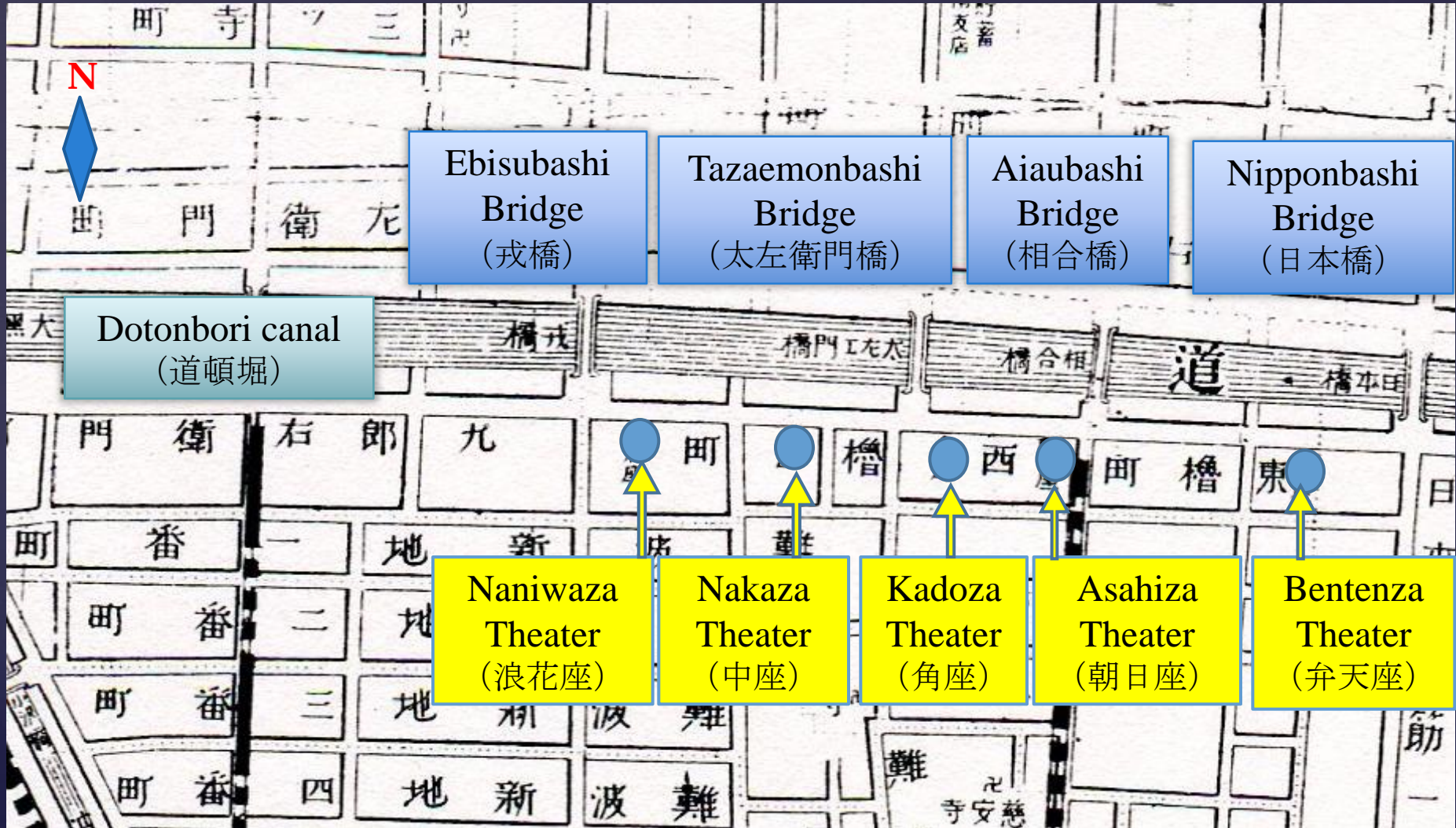


# Materials of stage carpenter Nakamura Giemon (中村儀右衛門)

The total materials : 455

- Nakamura Giemon's personal records (5)
- Nakamura Giemon's diaries and notebooks (15)
- Drawings for theaters, etc (221)
- Specifications, etc (70)
- Odogucho, notebooks of stage settings and scenery  
(132)
- Accounts (5)
- Attendance books (2)
- and others (5)

# The five theaters in Dotonbori canal in the Meiji Era



# Nakamura Giemon's personal record



平吉二十日...  
 大正二年...  
 山田...  
 現...  
 一 右列記ノ外ニ記載致度建築設計ニ不...  
 二 工匠見ルヘキ所...  
 三 粗大ノ男考...  
 四 設計ノ自案...  
 五 共ニ列本ノ自...  
 六 世中...  
 七 証明  
 大工棟梁  
 中村儀右衛門  
 明治二十二年六月  
 中村儀右衛門  
 明治二十二年六月  
 中村儀右衛門  
 大工棟梁  
 中村儀右衛門  
 証明  
 大工棟梁  
 中村儀右衛門

# Nakamura Giemon

8 December, 1852

Born in Osaka.Naramatsu.

1863

He was trained as a carpenter under his father.

February, 1872

He succeeded his father, and changed his name from Naramatsu to Giemon.

1872–1880

Construction of the buildings such as elementary schools, a hospital and a house in Kyoto, Osaka, Kumamoto and Kagoshima.

1885–1891

Construction of a building attached to the Imperial Palace in Tokyo, etc.

1890–1891

柳盛座(東京)

(Ryuseiza Theater, Tokyo)

⇒ His first construction of theater

1892-1893

新町廓事務所・婦徳会場 (大阪・新町)  
(The office of Shinmachikuruwa and Futokukaijyo,  
Shinmachi, Osaka)

(construction)

January, 1893

横井座 (大阪・千日前)  
(Yokoiza Theater, Sennichimae, Osaka)

(design and construction)

May, 1894

弁天座 (大阪・道頓堀)  
(Bentenza Theater, Dotonbori, Osaka)

(design and construction)



March, 1895

浪花座 (道頓堀)

(Naniwaza Theater, Dotonbori, Osaka) (repair)

May, 1896

天満座 (大阪・天満)

(Tenmaza Theater near Tenmatenjinsya Shrine, Osaka)  
(design and construction)

November, 1896

大阪歌舞伎 (大阪・梅田)

(Osakakabuki Theater near Umeda railway station, Osaka)  
(design and construction)

May, 1898

角座 (道頓堀)

(Kadoza Theater, Dotonbori, Osaka) (repair)

## March, 1901

松島八千代座(大阪・松島)

(Matsushimayachiyozza Theater, Matsushima, Osaka)

(design and construction)

## August, 1908

常盤座(大阪・千日前)、玉造座(大阪・玉造)

(Tokiwaza Theater, Sennichima)

(Tamatsukuriza Theater, Tamatsukuri, Osaka)

(design and construction)

## 1910

浪花座(道頓堀)

(Naniwaza Theater, Dotonbori, Osaka)

(design and construction)

1910 老松座(大阪・天満)  
(Oimatsuza Theater, Tenma, Osaka)

November, 1910–April, 1911 電気館(千日前)  
(Denkikan Theater, Sennichimae, Osaka)

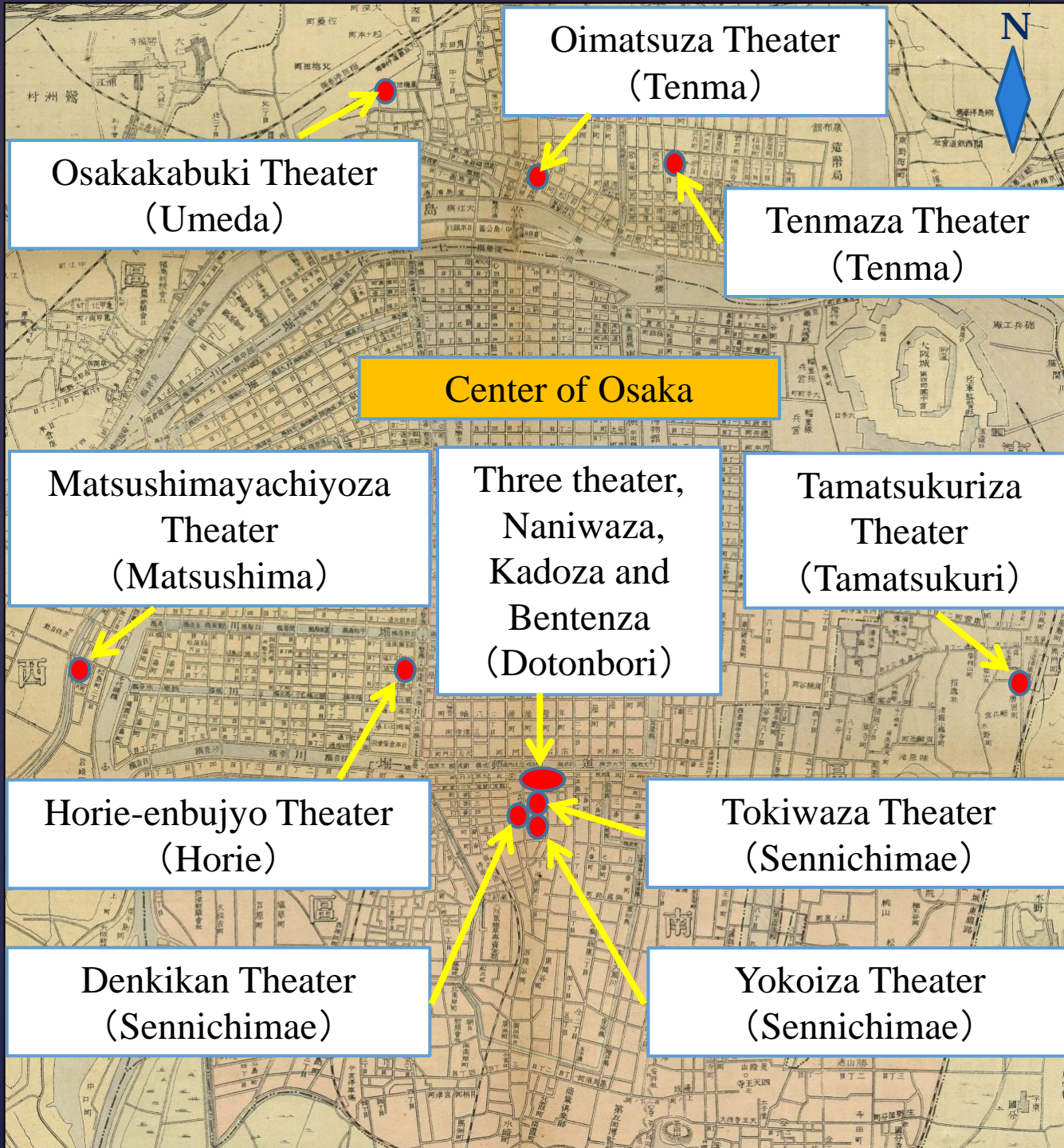
June, 1911 千日前帝国館活運写真  
(Teikokukan, Sennichimae, Osaka)

November, 1911– June, 1912 京都座(京都・新京極)  
(Kyotoza Theater, Shinkyogoku, Kyoto)

September, 1912–November, 1912 常盤座(千日前)  
(Tokiwaza Theater, Sennichimae, Osaka)

March, 1913 堀江遊廓演舞場(大阪・堀江)  
(Horie-yukakuenbujyo Theater, Horie, Osaka)

# Map of Giemon's construction of main theaters in Osaka



Oimatsuza Theater  
(Tenma)

Osakakabuki Theater  
(Umeda)

Tenmaza Theater  
(Tenma)

Center of Osaka

Matsushimayachioza  
Theater  
(Matsushima)

Three theater,  
Naniwaza,  
Kadoza and  
Bentenza  
(Dotonbori)

Tamatsukuriza  
Theater  
(Tamatsukuri)

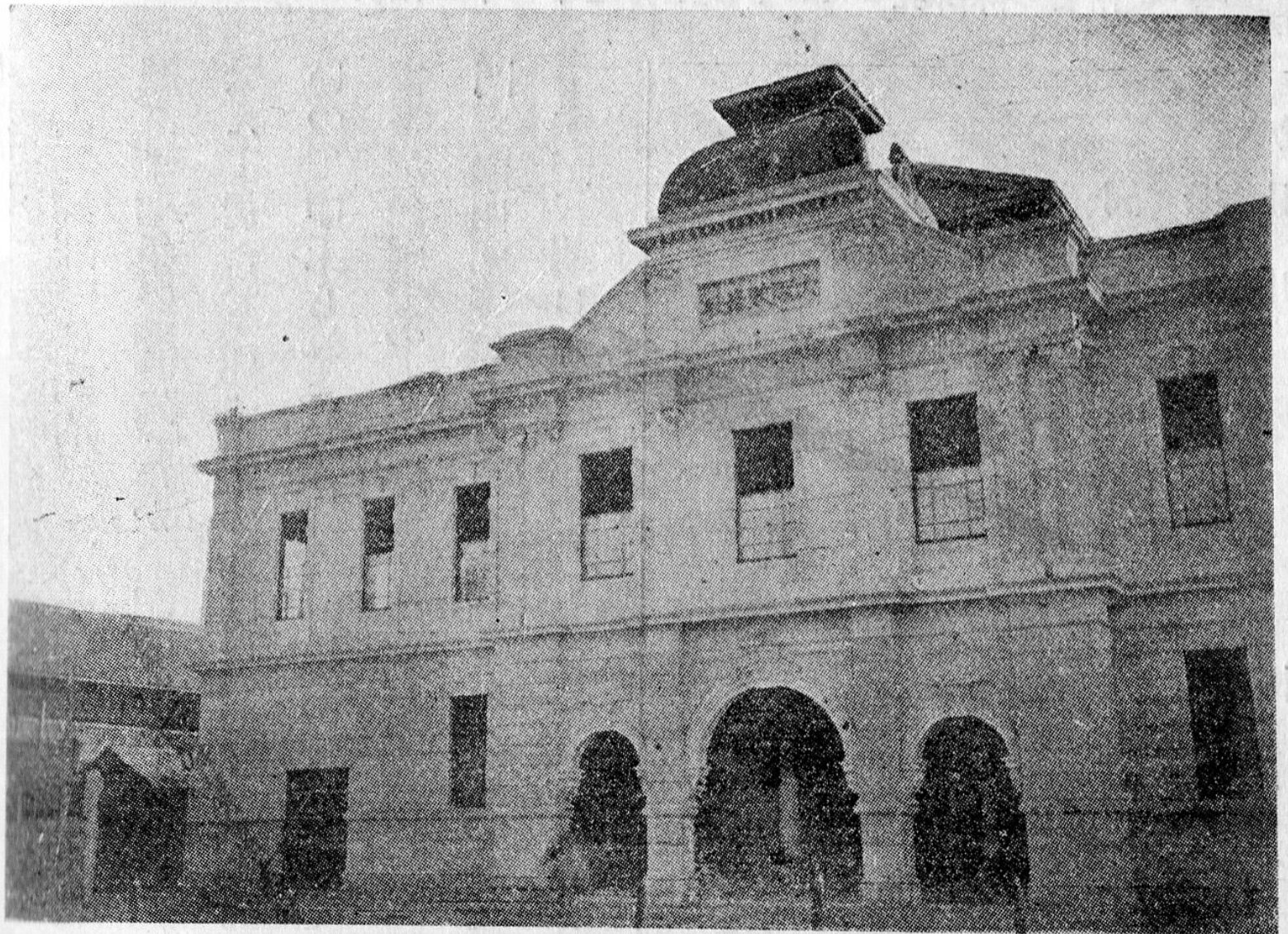
Horie-enbujo Theater  
(Horie)

Tokiwaza Theater  
(Sennichimae)

Denkikan Theater  
(Sennichimae)

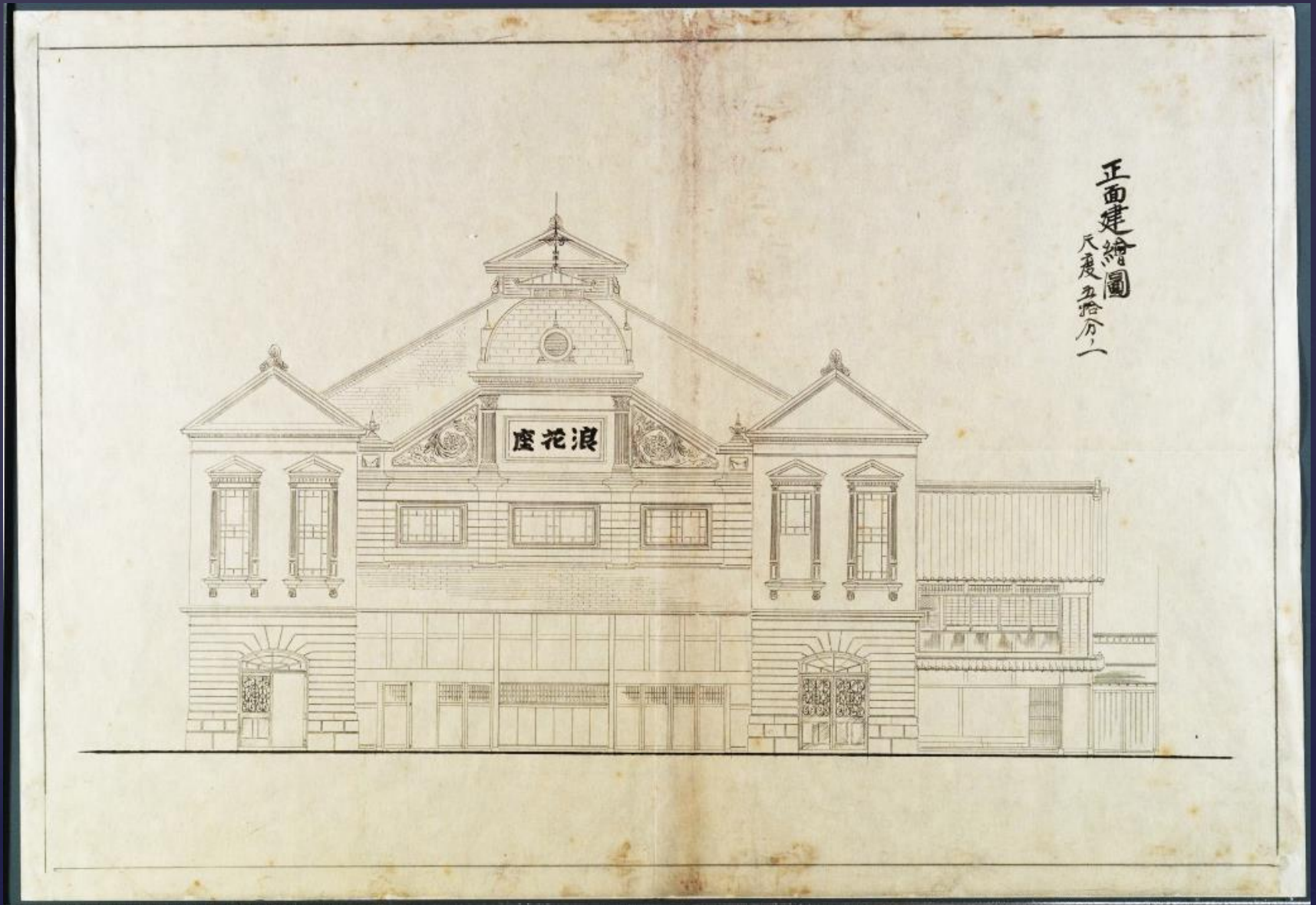
Yokoiza Theater  
(Sennichimae)

# Osakakabuki Theater, Umeda



(『郷土研究 上方』 第13号より転載)

# Drawing for Naniwaza Theater, Dotonbori





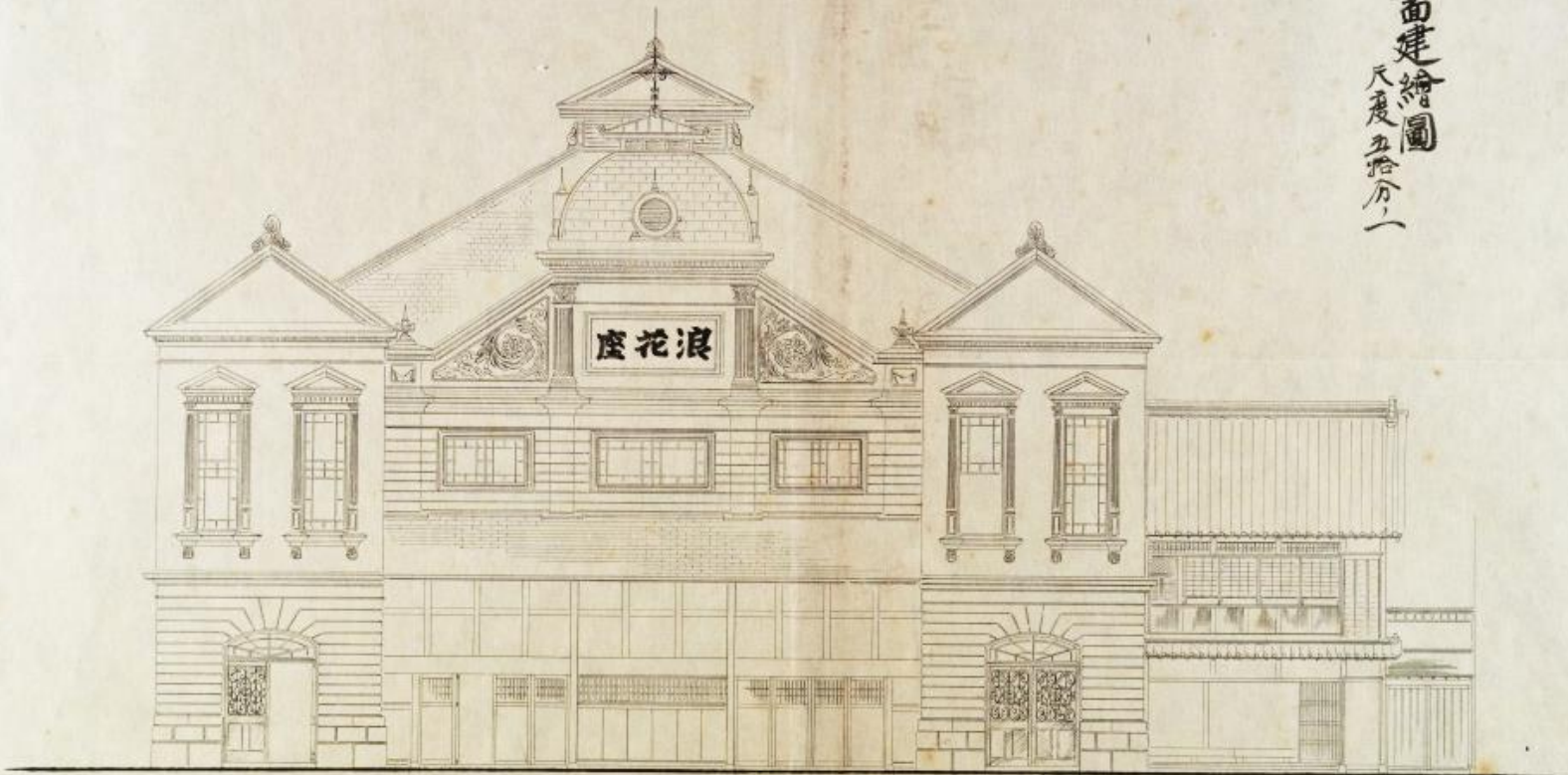


浪花座開場式当日の場内と表飾り

(『近代歌舞伎年表 大阪篇』 第5巻より転載)



正面建繪圖  
尺度五拾分(一)



# Replica of Naniwaza Theater



(図録『再現！道頓堀の芝居小屋』より転載)



(図録『再現！道頓堀の芝居小屋』より転載)

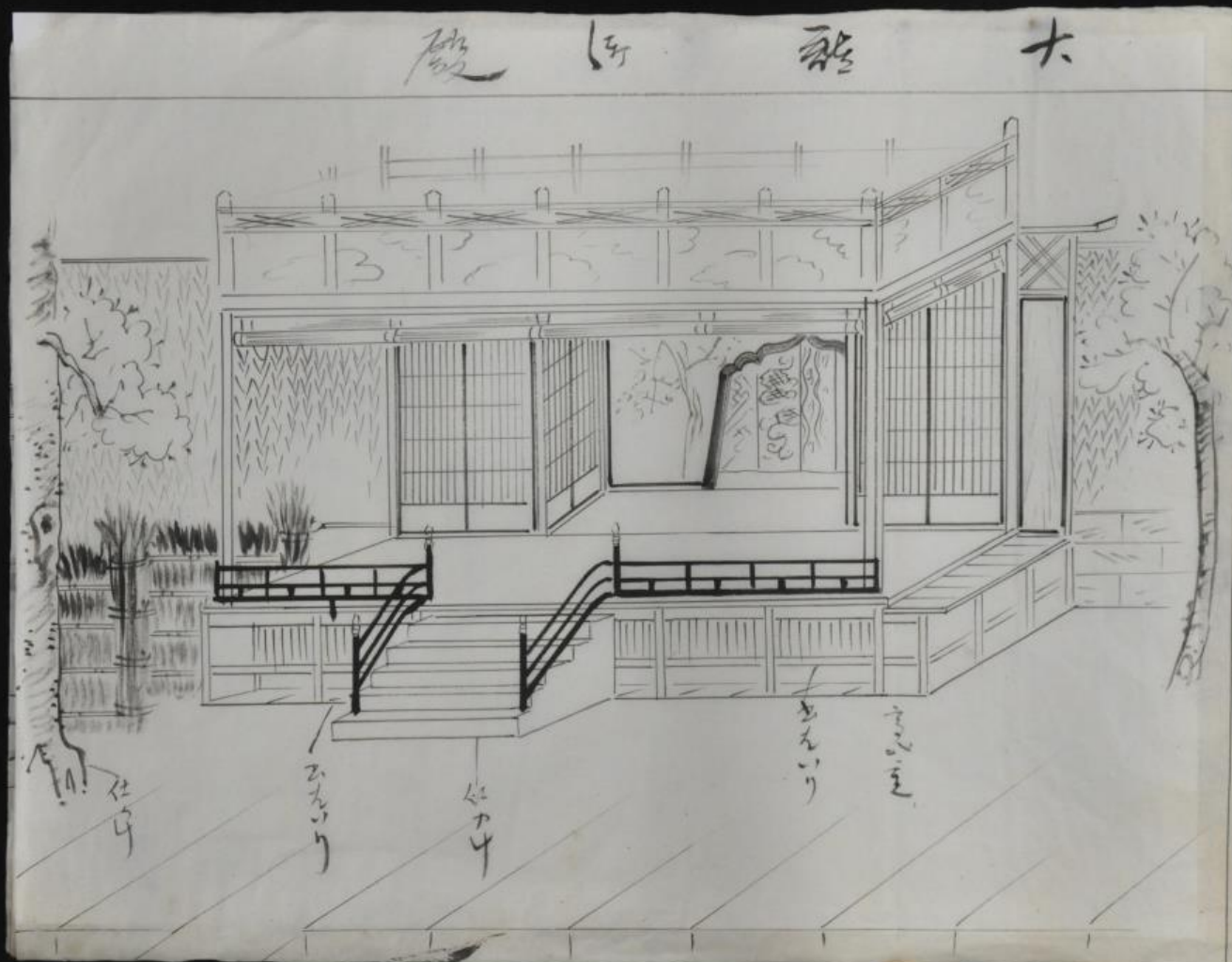
# Korakukan Theater (康楽館), Akita



# Odogucho (大道具帳), notebooks of stage settings and scenery



(Naniwaza Theater)



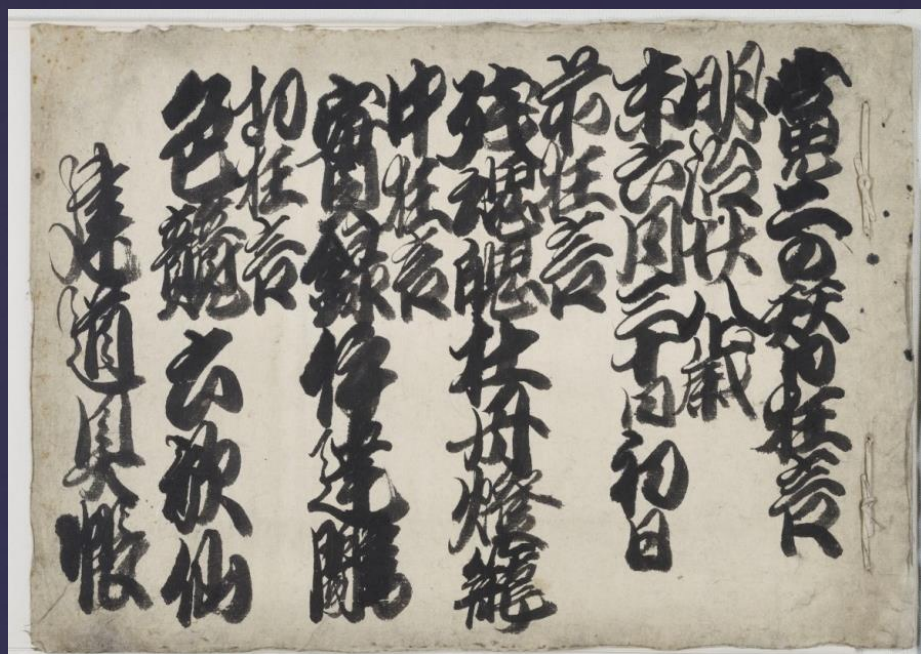
Yoshitsunesenbonzakura (『義経千本桜』)

sumi ink sketches and written notes



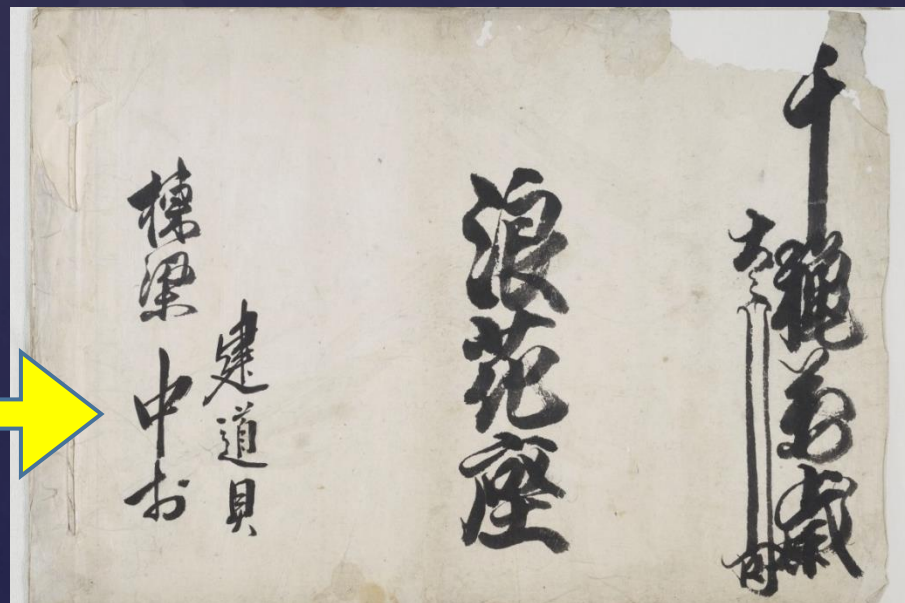
Unknown

Odogucho  
(June, 1895  
Naniwaza Theater)



(front)

「棟梁  
中村」



(back)



「建築請負業・大道具師」



Nakamura Giemon's mark

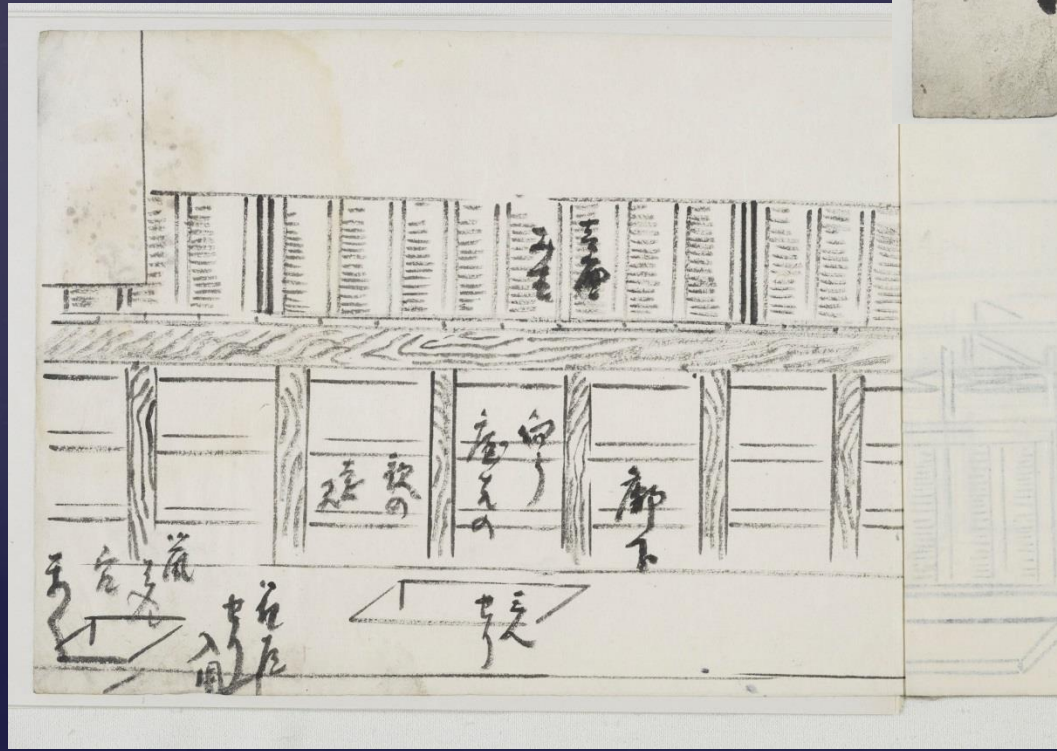
「大阪市南区九郎右衛門町  
二五一番邸」(道頓堀)

Odogushi (大道具師), Master of making stage

Odogucho  
(February, 1902  
Naniwaza Theater)

當國の諸三不五業に月夜に登  
前 佛羅先代禱  
中 嫁おさし谷  
切 源平魁躰  
建道真帳

(front)



(back)