

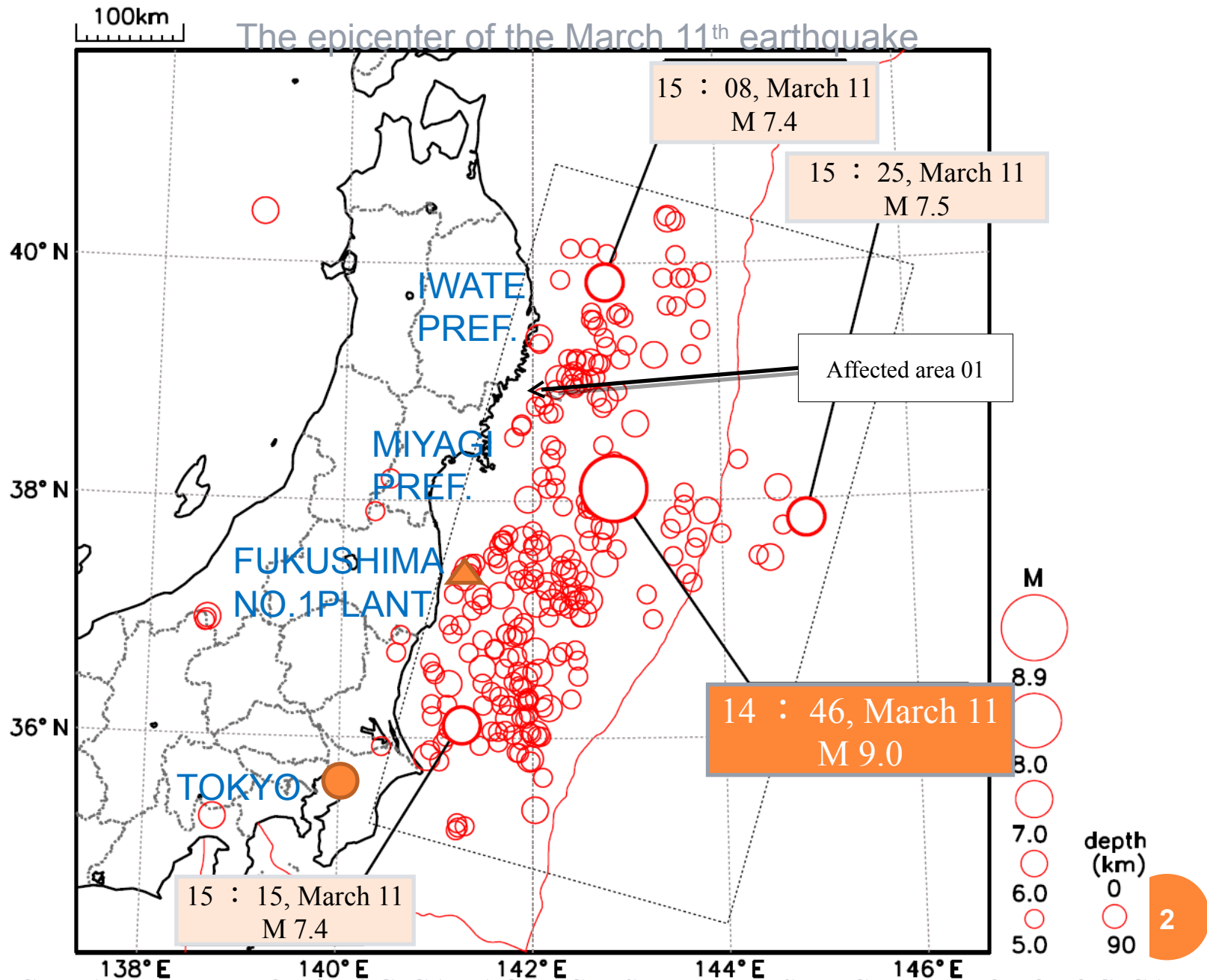
GREAT EAST JAPAN EARTHQUAKE AND LIBRARIES: CLEARING UP AND PROVIDING SUPPORT

September 7, 2011



Kei Okahisa

National Diet Library, Japan



SOURCE: JAPAN METEOROLOGICAL AGENCY, SENDAI DISTRICT METEOROLOGICAL OBSERVATORY

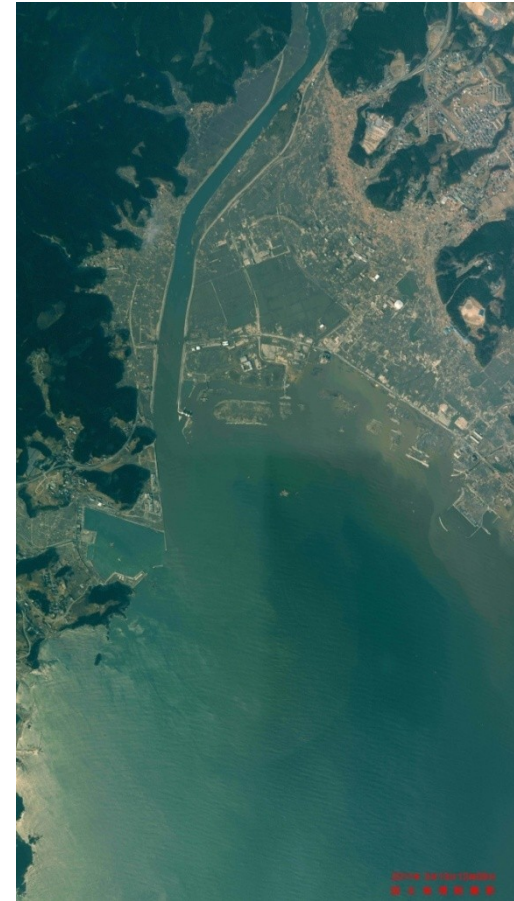
WORST AFFECTED AREAS - 01

Rikuzen-takada city, Iwate Pref.

October 1982



March 13, 2011



Source: Geospatial Information Authority of Japan

WORST AFFECTED AREAS - 02

Otsuchi-cho, Iwate Pref.

1999



March 13, 2011



WORST AFFECTED AREAS - 03

Minamisanriku-cho, Miyagi Pref.

Oct. 1977



March 12, 2011



REPORTED TOLLS IN TOTAL

- **Dead 15,508**
- **Missing 7,207**
- **Buildings wholly or partially damaged 210,789**
- **Reported damage to roads 3,559**

Source: National Police Agency, June 30, 2011

HOW LIBRARIES FARED?

Reported damage to social-educational facilities (mostly in Tohoku Region)

- 894 community centres
- 128 life-long learning facilities
- 236 museums
- **251 libraries**

Source: Ministry of Education, Culture, Sports, Science and Technology, June 16, 2011

LIBRARIES THAT TOOK THE BRUNT OF THE EARTHQUAKE 01

Rikuzen-takada city Library



LIBRARIES THAT TOOK THE BRUNT OF THE EARTHQUAKE 02

Otsuchi-cho Library inside and out



LIBRARIES THAT TOOK THE BRUNT OF THE EARTHQUAKE 03

Minamisanriku-cho Library



NDL - POST-QUAKE

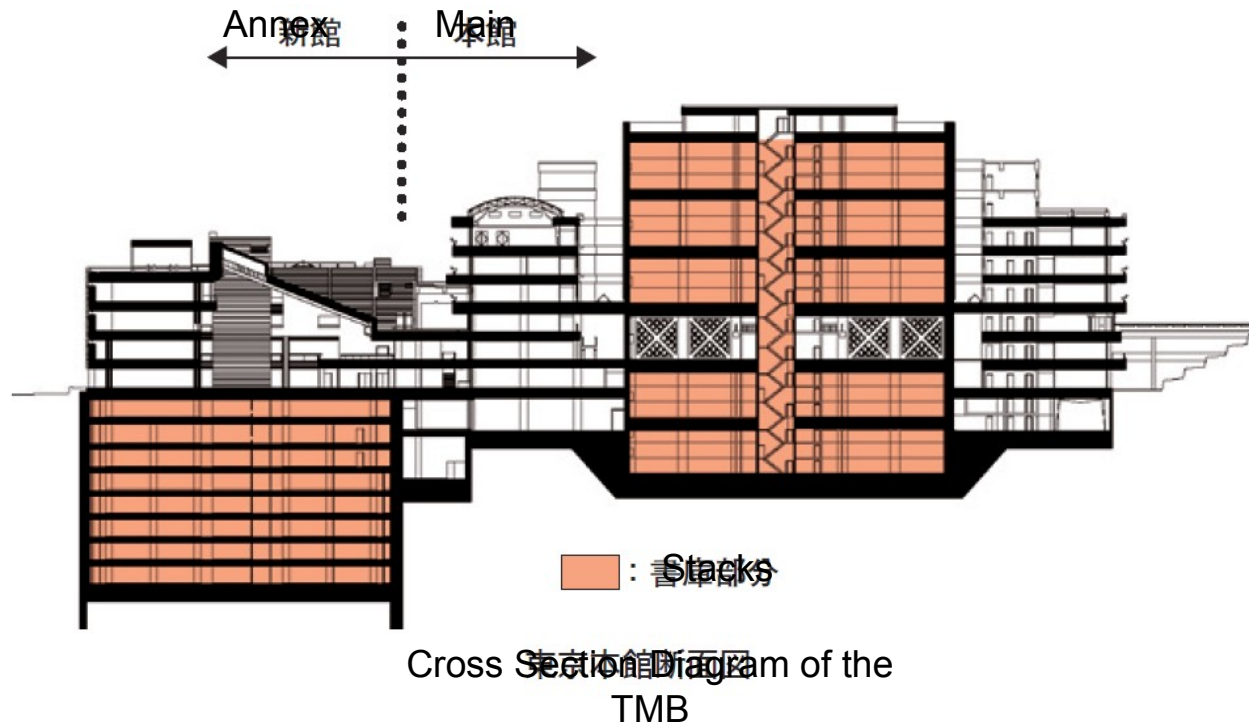
BEFORE MARCH 11



AFTER MARCH 11

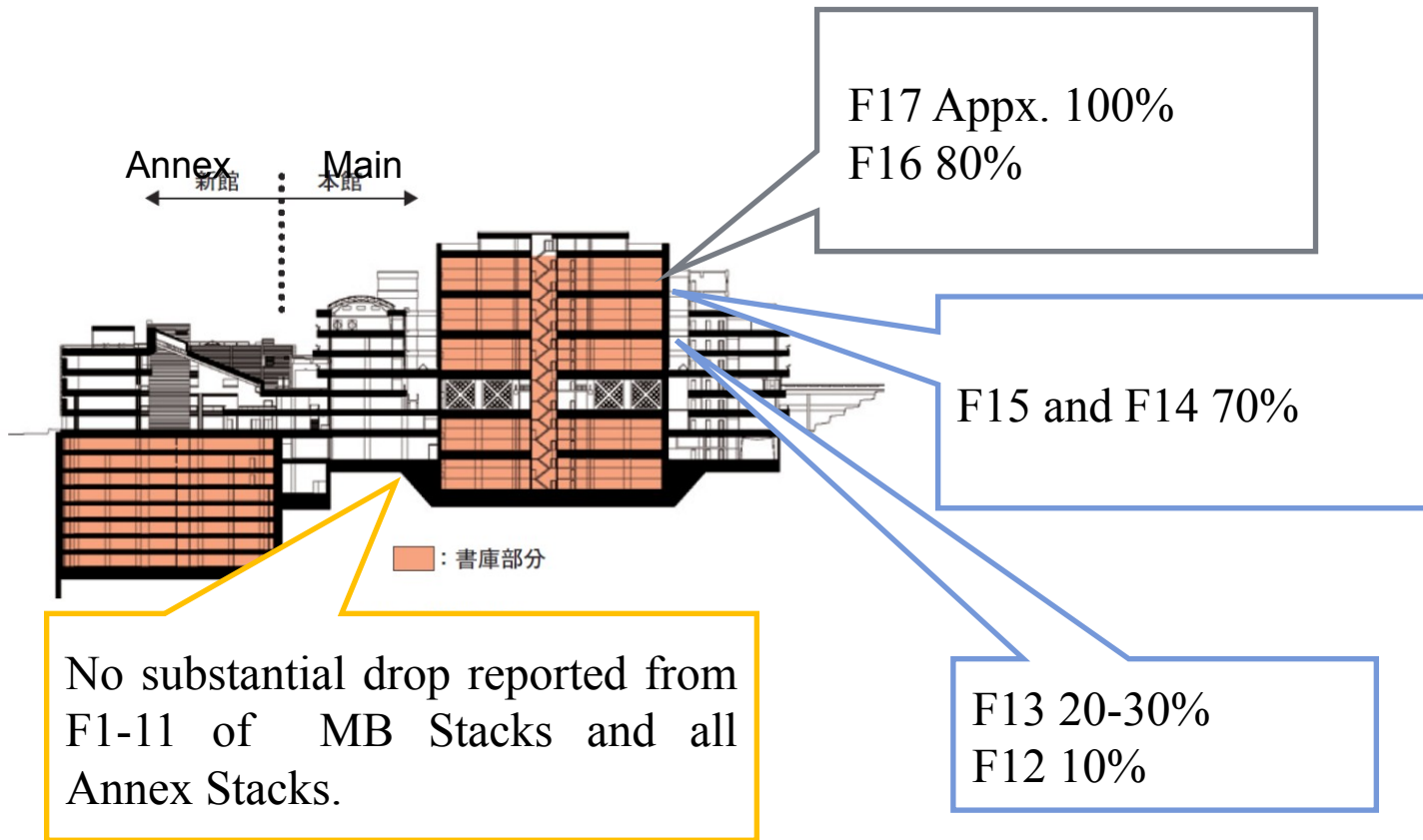


STRUCTURE OF TOKYO MAIN LIBRARY



- Main Building (b.1968) Multilayered-structural stacks (11 floors above, 6 under-ground). Now being upgraded to be earthquake resistant
- Annex Building (b.1986) Underground 8 floors of stacks

DROP-OFF RATE IN STACKS



Total of 1.8 million vols. fell off the MB stacks.

POST-QUAKE OPERATION

- Opened on March 12 (Sat.) but only periodicals served. 318 visitors (average of daily visits around 1,688 in FY2010).
- Closed on March 14 (Mon.) due to Tokyo-wide traffic disruption.
- Operated 2 hours less from March 15 (Tue.), closing at 17:00. Books in the affected stacks remained untouched, also compromising Diet and remote user services.

RESTORATION PROCESS

- F12 and 13 restored within March by the Book Service Division. In service from April 1 onward.
- F16 and F17 restored between March 22-31: 104 man-day average, total of 833 did the work. In service from April 11.
- F14 and 15 restored by an outsourced company entrusted with book delivery. In service from April 25.

IT COMES DOWN TO MANUAL LABOUR



NORMALIZING THE SERVICE

- All the materials available and operating hours back to normal (9:30-19:00) from April 25
- Small portion of collection physically damaged (around 300 vols.)
- Further challenges ahead
 - ✓ Damage control measures (for higher floors)
 - ✓ Common rules to ensure security in a disaster
 - ✓ Accurate relay of information and communication

SUPPORTING AFFLICTED REGION

GOVERNMENTAL SUPPORT TO REBUILD DAMAGED SOCIAL-EDUCATIONAL FACILITIES

First supplementary budget allocates 8.7 billion yen to *Grants for Rebuilding Public Social-Educational Facilities*.

- Applicable area
148 municipalities in 9 prefectures.
- Applicable buildings
Public social-educational facilities (**libraries**, civic centers, museums, gymnasiums etc.) damaged by the earthquake.
- Local burden
Grants cover 2/3 of the expense. Local authorities allowed to issue bonds for the rest of which 95% will be covered by local tax grants.

ROLES PLAYED BY THE JAPAN LIBRARY ASSOCIATION

- Organizing and dispatching groups of volunteers
 - ✓ Help-Toshokan team⇒b/w Apr.-May and Jun.-Jul.
 - ✓ **Volunteer coordination** portal⇒7/13-. A system to coordinate book restoration
- Channeling relief resources
 - ✓ Monetary donation targeted at 20 million yen (€180k, £158k)⇒67% met as of end of June
 - ✓ Corporate contribution⇒materials and labour for book-coating, book-trucks, administering the **on-line digital book** library etc.

ROLES PLAYED BY THE JAPAN LIBRARY ASSOCIATION (CONT'D)

- Placing a temporal and partial stay on authors' right of public transmission (agreement with 8 major stakeholder bodies) .
- ✓ Enables copies to be sent via fax and e-mail
- ✓ Enables duplication of materials to be used for story-reading for the vulnerable in the affected areas
- ✓ Effective where and when “normal procurement of needed materials is difficult”

OUTLINE OF THE SUPPORT BY THE NDL

- (1) Supporting restoration and preservation of materials in the afflicted libraries
- (2) Archiving web resources of the earthquake to be handed down to posterity
- (3) Contributing to the national debate in the Diet on disaster, reconstruction and nuclear power

RESTORATION AND CONSERVATION OF DAMAGED MATERIALS

- Field investigation to assess the needs for restoration and conservation in the affected areas (5/9-11)
 - ✓ Miyagi Prefecture: Prefectural Library
 - ✓ Iwate Prefecture: Prefectural Library, Kamaishi City Library, Noda Village Library
 - ✓ Fukushima Prefecture: Prefectural Library
- One staff member dispatched to support restoration of damaged materials (5/30-6/2)
 - ✓ Iwate Prefecture: Noda Village Library

THE STATE OF NODA VILLAGE LIBRARY 01



THE STATE OF NODA VILLAGE LIBRARY 02



THE WORK DONE AT NODA VILLAGE LIBRARY

● Sorting

- ✓ Severely damaged, replaceable materials to be discarded
- ✓ Unique local historical materials to be listed and restored

● Securing manpower

Neighboring libraries contributed 10 staff a day under the guidance of the Prefectural Library

● Restoring damaged materials

- ✓ Brushing off dried mud
- ✓ Alcohol wiping to remove mold

TOTAL OF 240 MATERIALS SAVED



ARCHIVING WEB RESOURCES OF THE EARTHQUAKE 01

Archived through the NDL's Web Archiving Project

The screenshot shows a Windows Internet Explorer browser window displaying the search page of the National Diet Library's (NDL) Web Archiving Project. The address bar shows the URL <http://warp.dandl.go.jp/search/>. The page title is "インターネット資料収集保存事業(ウェブサイト別) | 国立国会図書館 - Windows Internet Explorer".

The page content includes a navigation menu with links for "本事業の紹介", "管理責任者の皆様へ", "利用方法", "Q&A", and "お問い合わせ". Below this is a search section with three tabs: "簡易検索" (Simple Search), "書誌・本文検索" (Bibliography/Full-text Search), and "ディレクトリ検索" (Directory Search). The "簡易検索" tab is selected.

The "簡易検索" section contains the following text: "（書誌情報のタイトル、編者、公開者(出版者)、起点URLと本文情報の本文、ページタイトルが検索できます。）" and "※URLから検索する場合は、書誌・本文検索をご利用ください。". Below this text is a search form with a "キーワード" (Keyword) input field, a "検索" (Search) button, and a "クリア" (Clear) button. The "コレクション種別" (Collection Type) section has several checkboxes: "国の機関" (National Institution), "都道府県" (Prefecture), "政令指定都市" (City designated by ordinance), "市町村" (City/Town/Village), "市町村合併" (Municipal Merger), "特別地方公共団体" (Special Local Public Body), "法人・機構" (Institution), "大学" (University), "イベント" (Event), and "電子雑誌" (Electronic Magazine). The "収集日付範囲" (Collection Date Range) section has dropdown menus for year and month.

At the bottom of the page, there is an "お知らせ" (Notice) section, an "RSS配信" (RSS Feeds) link, and a "著作別で検索する" (Search by Author) link.

The browser's taskbar at the bottom shows several open applications: "2 Mozilla Thu...", "5 Windows E...", "3 Internet ...", "2 Microsoft ...", "2 Notepad", and "Microsoft Pow...". The system tray shows the time as 14:55 and the date as 11/14/2009.

ARCHIVING WEB RESOURCES OF THE EARTHQUAKE 02

- Based on National Diet Library Law amended in 2009
 - ✓ NDL empowered to archive “public” websites without permission
 - ✓ The NDL allowed to request the organizations to directly transmit web contents which cannot be harvested by web crawler.
- Intensive archiving carried out in post-quake period
- Cooperation with foreign organizations
 - ✓ Internet Archives
 - ✓ Reischauer Institute of Japanese Studies

CONTRIBUTING TO THE NATIONAL DEBATE IN THE DIET

Various reports to the National Diet compiled by the Research and Legislative Reference Bureau

- Reports on disaster
- Reports on use and safety of nuclear power

FURTHER ISSUES TO TACKLE

- Providing training in restoring damaged materials
- Helping develop a system for adjusting demand and supply in recovery activities
- Dispersing books to multiple areas