



Digitisation and Conservation of Early Japanese Books at Cambridge University Library: How to solve the problems caused by additional western bindings

Noboru Koyama
Cambridge University Library



1. Donation (£50,000) from Prof. Mikiko Ishii
treasures of Japanese collection (selected
Items)
digitised by Imaging Services
2. Digitisation by Ritsumeikan University ARC
(Prof. Akama's Project)
comprehensive

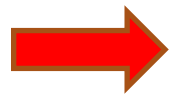
Problems of Digitisation (binding issues)

In order to make our early Japanese books stand on the shelf, simple western bindings were added to them in the 1960s. Originally these early Japanese books were bound in the traditional Japanese method using threads or strings. In some cases, these additional bindings present problems for the digitisation process.

Early Japanese materials (present situation)

1. Books with additional western bindings

A. Can be opened safely for digitisation



B. Unable to be opened safely for digitisation

2. Books in boxes or folding cases

3. Scrolls

Solutions (A)

To digitise these books without opening them fully (with partial opening)(“non-destructive” method for digitisation)

1. To digitise only one side at each time (without opening them fully)
2. To use V shape book cradle (book drive) for digitisation, such as “Book Drive Pro” and “Book Drive Mini” from ATIZ (U.S.A.)
3. To use the prism mechanism (opening angle is 60 degree), such as “Scan Robot” from Treventus Mechatronics (Germany)

Solutions (B)

To unbind these books for digitisation

1. To bind these books again after digitisation
(to return to original state after digitisation)
2. To add boxes or folding cases to these
books instead of rebinding them again after
digitisation

書物の置き方

和漢書は横に平にして積む。…

洋書は縦に立てゝ並べる。…

和漢書と洋書との置方の差は本箱を見ても分る。日本風支那風の本箱は縦に仕切り、西洋風の本箱は横に仕切つてある。

Bookcase (群書類從)



Bookcase(Sir Geoffrey Keynes Room)



誠心堂書店



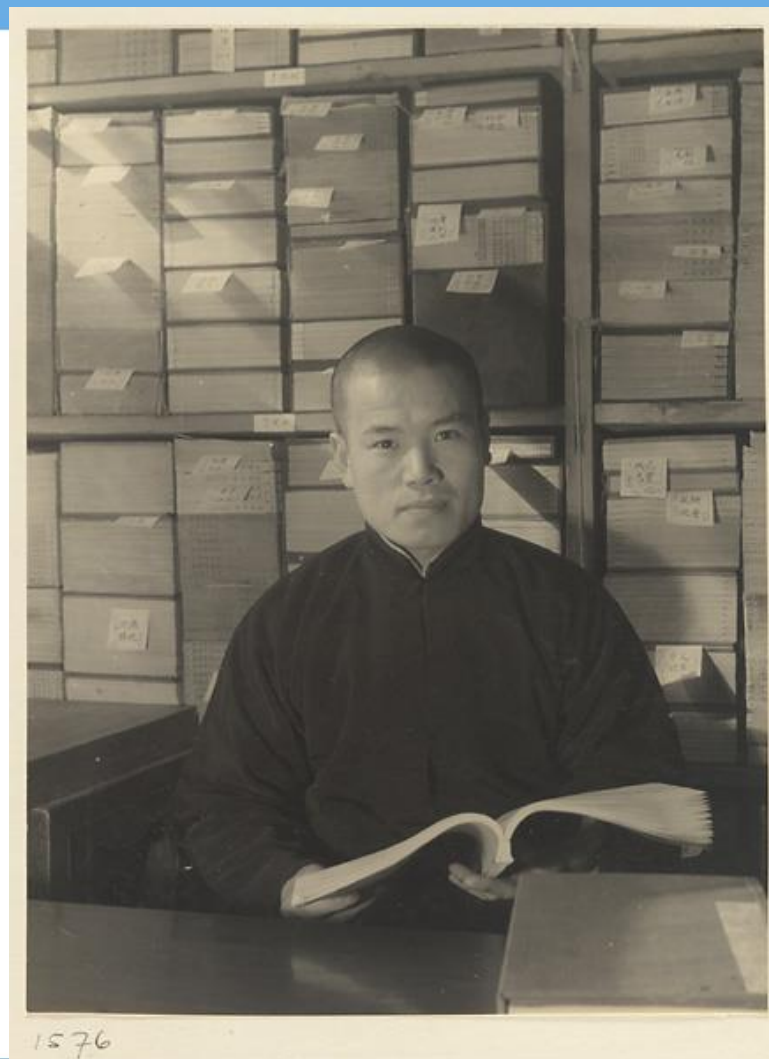
大屋書房(和本)



山本書店(漢籍)



Man seated in a bookshop (Hedda Morriosen Collection)





FJ

KAKEHOSHI
MONOGATARI

I

722

I







Bindings of Early Japanese Books in the 1960s

- *Annual Report of Library Syndicate for the year 1963-67*.
- “External binders bound 5,938 volumes and did much repair and miscellaneous work.”
- ULIB 11/1/24/42 (Tradesmen P-Z, 1963-1967)(‘Expenditure accounts ledgers’ 1920-72)
Remploy Ltd (Freshwater Rd., Dagenham, Essex)
bound thousand(5,938?) “Chinese books”.

Remploy Ltd

Remploy Ltd was set up in 1945 to employ disabled ex-servicemen and since then Remploy has been providing employment and support for disabled people, with large network of factories developed in the 1950s and 60s.



Early Japanese materials (present situation)

1. Books with additional western bindings



A. Can be opened safely for digitisation

B. Unable to be opened safely for digitisation



2. Books in boxes or folding cases



3. Scrolls



1. Donation (£50,000) from Prof. Mikiko Ishii
treasures of Japanese collection (selected
Items)
(we could avoid difficult ones)

Digitisation has started



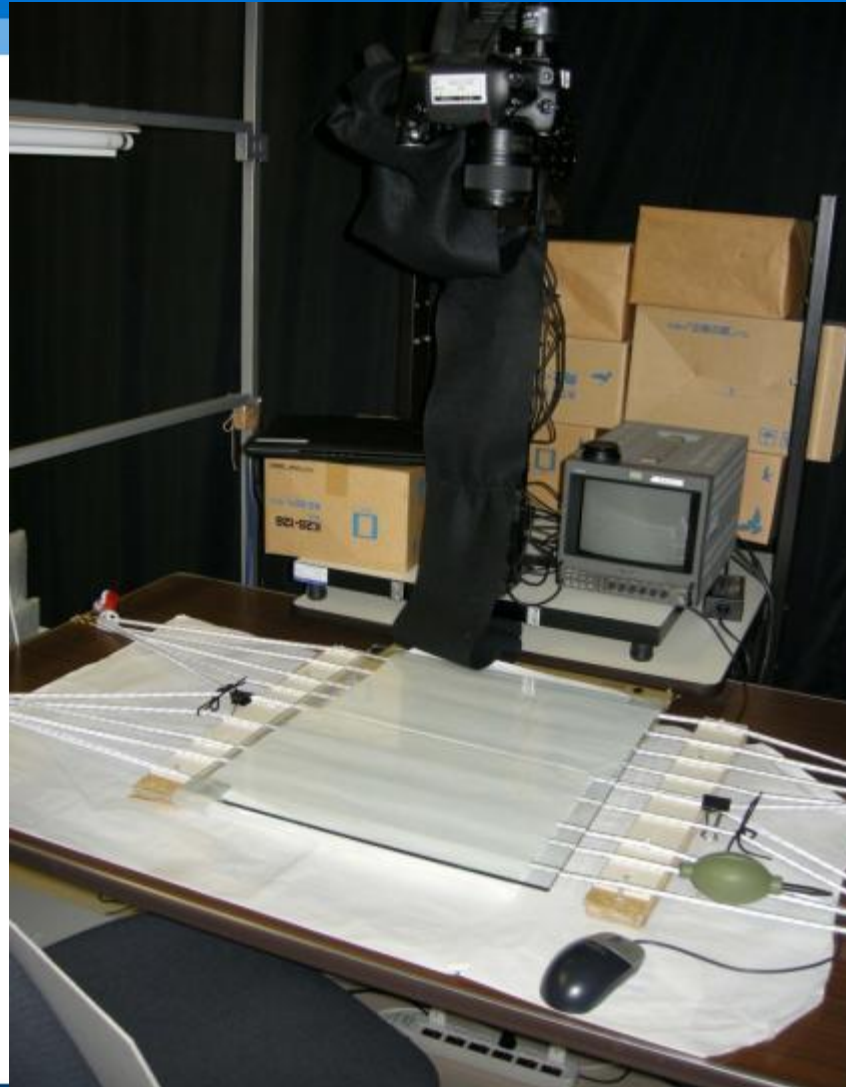
2. Digitisation by Ritsumeikan University ARC (Prof. Akama's Project) comprehensive

- Started from summer 2013
- 156 volumes have been digitised
- Digitised items have been available from Ritsumeikan University ARC website

Digitisation at Cambridge University Library (2013)



Ritsumeikan University Art Research Center Bungee Method



- <ケンブリッジ大学図書館蔵古典籍閲覧システム>
- http://www.dh-jac.net/db1/books/search_cambridge.php
- ID : cam-user
- PW : cambridge2013

ケンブリッジ大学付属図書館蔵日本古典籍閲覧システム

The screenshot shows a web browser window displaying the search system. The browser's address bar shows the local file path: C:\Users\Noboru\AppData\Local\Temp\ケンブリッジ大学付属図書館蔵日本古... The page title is 「ケンブリッジ大学付属図書館蔵日本古典籍閲覧システム」. The main content area includes a search form with fields for document number, title, author, and edition, and a search button. Below the form are sorting options and a link to the search manual. The footer contains copyright information and a link to the library's usage guidelines.

UNIVERSITY OF CAMBRIDGE

「ケンブリッジ大学付属図書館蔵日本古典籍閲覧システム」

複数巻を持つ作品の各巻の詳細タイトルも検索対象にしますか？
含まない

検索語を入れてください。

「先方一致」で検索します。「含む」検索の場合末尾に「*」を付けてください。

資料番号:		所蔵者:	ケンブリッジ大学図書館
資料名:		資料名よみ:	
編著者名:		ジャンル:	-
成立年:	西暦:	版元名:	-

整列条件1: なし | 昇順 | 整列条件2: なし | 昇順 | 整列条件3: なし | 昇順

一度に表示する件数: 12

検索条件を入れたら検索ボタンをクリックしてください。

検索 | 検索語のクリア | USERXでの検索 | 古典籍総合目録

↑検索語を入れない場合、全件閲覧できます。

[トップページへ戻る](#) | [検索の仕方](#) | [Wikiマニュアル](#) | [管理者ログイン](#)

[所蔵資料ご利用ガイド](#) please click here.

Copyright © 2005- Art Research Center, All Rights Reserved.

たけとり 上

書籍閲覧 760画面 - Internet Explorer

http://www.dh-jac.net/db1/books/results760.php?f1=FJ732.04&f12=1&enter=Cambridge&max=30&skip=0

ARC書籍閲覧システム

FJ732.04
たけとり
たけとり

全77頁の内1頁を表示中

画像のみのWindowを複数開き、画像を比較する場合は、それぞれの画像毎に記号を変えてクリックしてください。↓

A B C D E F G H
詳細書誌情報表示


縮小画像一覧
1024画面
1280画面

新選
翻刻
翻刻真

USER書込
ArtWiki

縦書き翻刻や注記など、関連するファイルを設定位置のWindowで開く事ができます。↓

左小窓 中小窓 右小窓
閉じる



ケンブリッジ大学図書館所蔵

Copyright © 2005- Art Research Center. All Rights Reserved.

所蔵資料の利用方法
please click here.




たけとり 上 サムネイル

書籍閲覧サムネイル結果一覧 - Internet Explorer
http://www.dh-jac.net/db1/books/results-thumb.php?f1=FJ732.04&f12=1&skip=0

デジタル書籍閲覧システム サムネイル一覧
たけとり FJ732.04 ケンブリッジ大学図書館所蔵 全 77頁の内 1 頁から 30 頁を表示

サムネイル画像をクリックすると、閲覧モードに移ります。

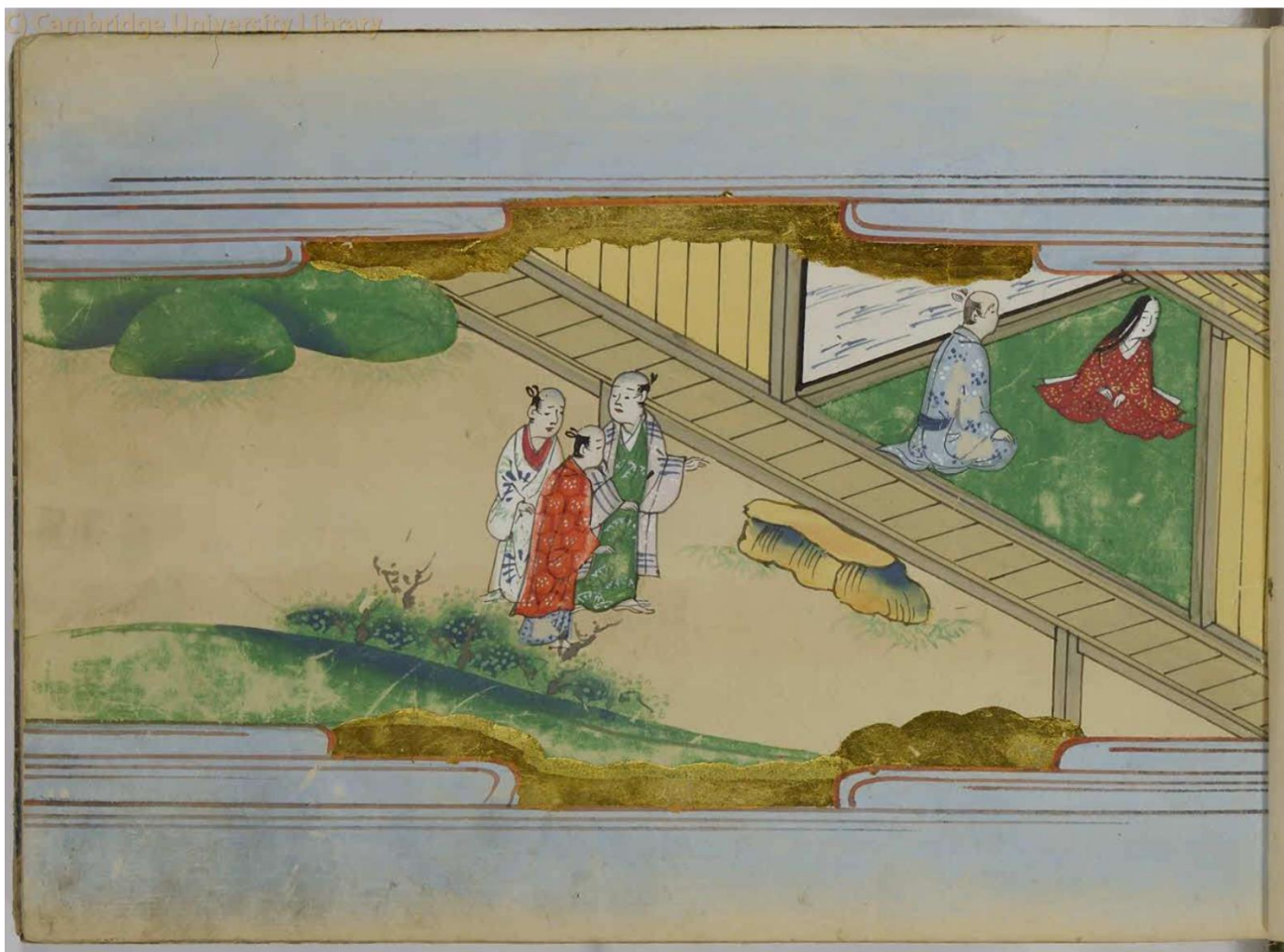


トップページ 新規検索 次ページ→ 最後


所蔵資料ご利用方法 please click here

Copyright © 2005 - Art Research Center .All Rights Reserved.

たけとり 上 9ページ




Early Japanese materials (present situation)

1. Books with additional western bindings
 - A. Can be opened safely for digitisation
 -  B. Unable to be opened safely for digitisation
2. Books in boxes or folding cases
3. Scrolls

Solutions (A)

To digitise these books without opening them fully (with partial opening)(“non-destructive” method for digitisation)

1. To digitise only one side at each time (without opening them fully)

 2. To use V shape book cradle (book drive) for digitisation, such as “Book Drive Pro” and “Book Drive Mini” from ATIZ (U.S.A.)

3. To use the prism mechanism (opening angle is 60 degree), such as “Scan Robot” from Treventus Mechatronics (Germany)

Libraries and Institutions (which I visited in December 2013)

- * Keio University Library (Tokyo)
- * Waseda University Library (Tokyo)
- * Kansai University (Center of Study of Asian Cultures and University Library) (Suita-shi in Osaka Prefecture)
- * Ritsumeikan University (Art Research Center)(Kyoto)
- * Kyoto University Library (Kyoto)
- * National Diet Library Kansaikan (Kansai Branch) (in Kyoto Prefecture)
- * Kyoto Prefectural Library and Archives (Kyoto)
- * National Diet Library (Tokyo)
- * Sugiura Laboratory (Tokyo)

“Book Drive Mini” from ATIZ



“Book Drive Pro” from ATIZ





“Scan Robot” from Treventus Mechatronics



Solutions (B)

To unbind these books for digitisation

1. To bind these books again after digitisation
(to return to original state after digitisation)

 2. To add boxes or folding cases to these books instead of rebinding them again after digitisation



畫本棧道物語

六

畫本棧道物語

五

畫本棧道物語

四

FJ.722.2





Trace of Removal



Trace of Removal









Digitisation and Conservation 1

There are multiple methods for the digitisation of early Japanese books available to us.

These methods give us access to a broader and longer-term view about the conservation of these books.

Digitisation and Conservation 2

The problem about how to digitise these early Japanese books which cannot be opened fully is a result of the binding problems, and we can consider the issues of both digitisation and conservation of early Japanese books together. Since the current state of our early Japanese books that have Western bindings is not ideal from the point of view of their long-term conservation, one possibility is to unbind the additional Western bindings and then, instead of rebinding them after digitisation, to store the books either in boxes or folding cases (chitsu).

*Early Japanese Books in Cambridge University
Library: a Catalogue of the Aston, Satow and Von
Siebold Collections*

(Hayashi Nozomu & Peter Kornicki)

“Introduction”

“We need external help and support”

For digitisation and conservation of early Japanese materials in Europe, we need external help and support.

Cambridge

Digitisation: Prof. Ishii and Ritsumeikan University ARC

**Conservation : Dispatching Specialist(s) from Japan by
Cultural and Funding Organisations**

遠藤諦之輔著

古文書修補六十年

和装本の修補と造本

汲古書院



『古文書修補六十年』(遠藤諦之輔)

当時ルーベン国際事業委員会(会長は和田萬吉博士)という機関が肝りとなって行なわれた、外国の図書館への和本の寄贈事業が私に千載一遇のチャンスを与えてくれました。およそ三千冊という書物を寄贈する前に、帙を制作することになったのです。

池上の主人と二人でボール紙を持参して上野美術学校に行き寸法を取って裁ち、家に持ち帰っては下地を造り、またそれを持って行って本を実際に入れて確かめてみてから仕上げる(だからひとつとして失敗はありませんでした)という方法で、一カ月に三百個の帙を制作するという、相当に忙しい仕事でした。まだ満足に包丁を使えない頃で、私にとっては佳い勉強となりました。