

# Opportunities for Global Collaboration in Collection Discovery

## The Notable Japanese Collections Dashboard Project

Yukari Sugiyama, Yale University  
Ann Marie Davis, The Ohio State University  
Katherine Matsuura, Harvard University  
EAJRS 2023 Leuven | September 13, 2023



# NJC Project Overview

NCC's Notable Japanese Collections Working  
Group



**Yukari Sugiyama**  
*E-Resources*  
*Discovery Librarian*  
Yale University



**Ann Marie Davis**  
*Japanese Studies*  
*Librarian*  
The Ohio State  
University



**Katherine Matsuura**  
*Japan Digital*  
*Scholarship Librarian*  
Harvard University



## **Project Goals:**

- Develop an interactive tool, or “dashboard”
- Build a comprehensive list and map of notable collections
- Provide a searchable database for librarians and scholars
- Leverage the projects and data collected by our colleagues

# Inspirations and Models

Digital Collections for Chi... Institution Search ... Collecti... Search ... DH Project No categor... Start Year -5,000+ End Year less tha...

222 222

List of Collections

- [Book Collection on Hong Kong] @ University of Toronto Collection Webpage
- [Images related to Shanghai and other Chinese cities] @ Gatty Research Institute Collection Webpage
- [Manuscript Collection on Chinese Jews in Kaifeng] @ Hebrew Union College -

Advanced Search and Browse Function

The open-access tool helps researchers locate digital collections for Chinese studies and easily navigate resources such as archival materials, oral history, rare books, images and datasets. You can click the Advanced Search and Browse Function above to search.

Public Library 9  
Museum Library 5  
Independent 5  
Community Organization 1  
Research Institution  
Academic Institution 196

## The Digital Collections for Chinese Studies (DCCS)

## Japan Search Database

Folding screen of Itsukushima amusement

This folding screen depicts Itsukushima Shrine in present-day Hiroshima Prefecture. It depicts the view of Itsukushima from the north, with the lively atmosphere of people coming to the island for pleasure. Visitors arriving on the island by boat and the people who welcome them to their lodgings and provide hospitality are vividly depicted, and one can almost hear the bustling atmosphere.

CC BY  
Tokyo National Museum

JAPAN SEARCH

National Institute of Japanese Literature

## Directory of Overseas Collections of Old and Rare Japanese Books, Other Print Materials and Manuscripts

在外日本古典籍所蔵機関ディレクトリ

[About this Directory](#) [Directory List Table](#) [Directory Data](#) [日本語ページ](#)

### About this Directory

This directory provides information on libraries and museums outside of Japan th...

## The Directory of Overseas Collections



# Comparable Project(s)

## Jewish Collection Directory



### Mapping AJL

Welcome to the Association of Jewish Libraries' (AJL) Jewish Collection Directory! On this interactive map, you will find details about both well-known and lesser-known Judaica collections around the world.

To see collection categories, click on the toggle button on the top left portion of the map, the full-screen button on the top right, or use our [hint-sheet](#). The collection categories are arranged as follows:

- **Black square** – national libraries
- **Orange check mark** – public libraries
- **Gold lightning** – community center libraries
- **Green diamond** – pre-kindergarten and K-12 schools
- **Blue cone** – research and academic libraries
- **Purple star** – synagogues and religious institutions
- **Red open book** – archives and museums
- **Yellow circle** – digital libraries





# Notable Japanese Collections in North America

Submit Data!

[Home](#)

[Collection Overview](#)

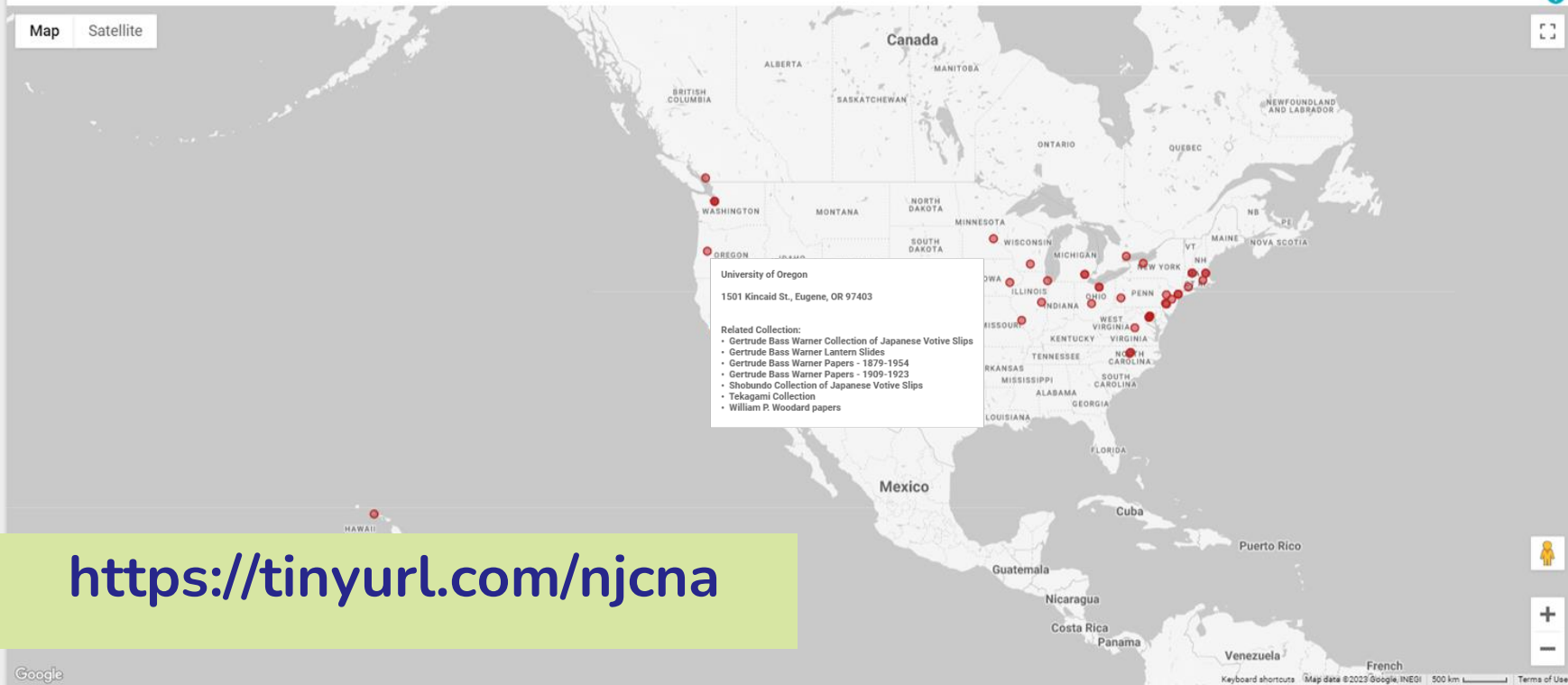
[Browse Collections](#)

[Directory](#)

[About](#)

The purpose of this website is to help scholars and librarians identify notable Japanese Studies collections in North American libraries and cultural institutions. It also serves as a pilot project toward building a comprehensive database that charts all print and digital materials, including unprocessed or partially processed collections, held at North American research organizations.

Map Satellite



<https://tinyurl.com/njcna>



# Notable Japanese Collections in North America

Submit Data!

Home

Collection Overview

Browse Collections

Directory

About

No. of Collections

219

Languages

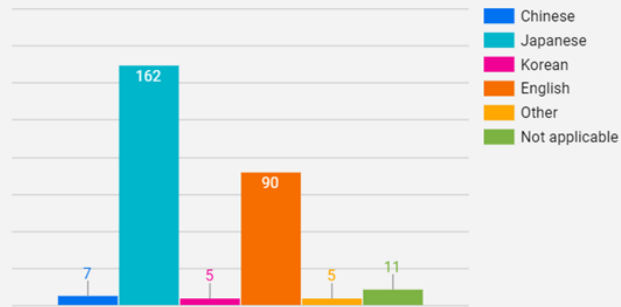
Digital Access

Formats

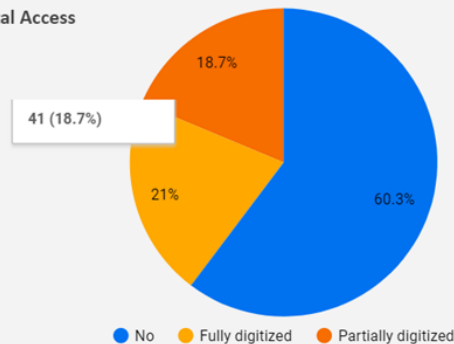
Time Periods

Reset

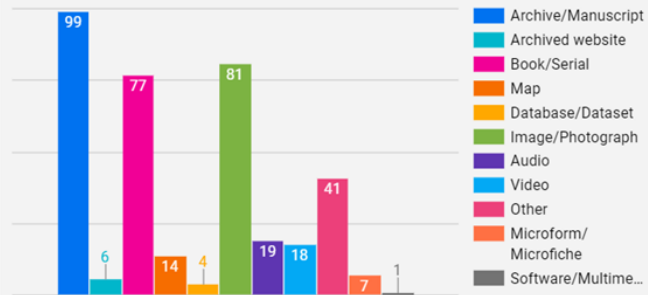
Languages



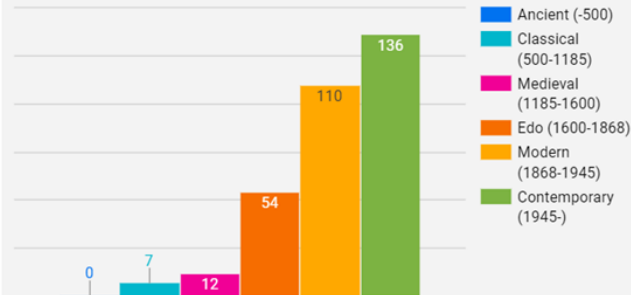
Digital Access



Formats



Time Periods





# Notable Japanese Collections in North America

[Submit Data!](#)[Home](#)[Collection Overview](#)[Browse Collections](#)[Directory](#)[About](#)Search (up to 5 words) Institution Name Formats Languages Time Periods Digital Access 

Results: 219

Featured Special Topics 

Reset

## 19TH AND 20TH CENTURY JAPANESE BUDDHISM (Duke University)

**Format:** Book/Serial**Language:** Japanese**Time Period:** Modern (1868-1945), Contemporary (1945-)**Digital Access:** No

Duke's focus has been on 19th and 20th century Japanese Buddhism. Notable resources include: Chūgai nippō, Shaji torishirabe ruisan, the collected works of Ikeda Daisaku and other materials related to the Soka gakkai, and the D. T. Suzuki Documentary Project Collection. The Divinity School library, together with Rubenstein, has collected missionary papers.

<http://guides.library.duke.edu/c.php?g=623543&p=4343952>

## 3/11 MANGA COLLECTION (Stanford University)

**Format:** Book/Serial**Language:** Japanese**Time Period:** Contemporary (1945-)**Digital Access:** No





# Notable Japanese Collections in North America

Submit Data!

[Home](#)
[Collection Overview](#)
[Browse Collections](#)
[Directory](#)
[About](#)

Institution Names ▲	Contact Information	Addresses	Related Collections
Amherst College	Archives and Special Collections archives@amherst.edu	440 Herter Hall, 161 Presidents Drive, Amherst, MA 01003	<ul style="list-style-type: none"> <li>Charles L. Kades Papers</li> </ul>
Brigham Young University	Timothy Davis timothy_davis@byu.edu	2060 Lee Lane, Provo, UT 84602	<ul style="list-style-type: none"> <li>Harry F. Bruning Collection</li> </ul>
Brown University	Brown University Library Special Collection hay@brown.edu	20 Prospect Street, Providence, RI 02912	<ul style="list-style-type: none"> <li>Great Kanto Earthquake of 1923</li> </ul>
California State University - Dominguez Hills	Yoko Okunishi Digital Collections Archivist Librarian University Library The Gerth Archives & Special Collections yokunishi@csudh.edu	1000 East Victoria Street, Carson, CA 90747	<ul style="list-style-type: none"> <li>CSU Japanese American Digitization Project</li> </ul>
Claremont Colleges	Xiuying Zou Head Asian Library xiuying.zou@claremont.edu	800 N Dartmouth Ave. Claremont, CA 91711	<ul style="list-style-type: none"> <li>Chikanobu and Yoshitoshi Woodblock Prints</li> <li>Japanese American World War II Incarceration</li> <li>Japanese Women's Contemporary Artist Zines</li> </ul>
Duke University	Matthew Hayes Japanese Studies Librarian matt.hayes@duke.edu	411 Chapel Dr, Durham, NC 27708	<ul style="list-style-type: none"> <li>19th and 20th century Japanese Buddhism</li> <li>Edmund J. Catrow photograph album and clippings, 1945-1972 and undated</li> <li>Henry Heyliger photograph album of occupied Japan, 1947</li> <li>History of Medicine in Japan</li> <li>Leon S. Adler papers, 1943-1993</li> <li>Masaki Motoi Collection of Japanese Student Movement Materials - 1959-2003 - bulk 1960-1979</li> <li>Maynard Miller photograph album of occupied Japan, 1946</li> <li>Robert L. Eichelberger papers, 1728-1984 (bulk 1942-1949).</li> <li>Sugoroku (Japanese board games) collection, 1896-circa 1950</li> <li>The Kanto Earthquake of 1923</li> </ul>
George Washington University	Global Resources Center grc@gwu.edu	2130 H Street, N.W., Washington, D.C. 22052	<ul style="list-style-type: none"> <li>Okinawa Collection/Japan Resource Center</li> </ul>
Harvard University	Kuniko Yamada McVey kmcvey@fas.harvard.edu	2 Divinity Ave, Cambridge, MA 02138	<ul style="list-style-type: none"> <li>Charles Perry Prints Collection</li> <li>Falconry manuscripts</li> <li>Jaanesse videogame collection</li> <li>Japanese art and design catalogs</li> <li>Manchukuo collection</li> <li>Patzold Buddhist scrolls collection</li> </ul>



# Notable Japanese Collections in North America

[Submit Data!](#)[Home](#)[Collection Overview](#)[Browse Collections](#)[Directory](#)[About](#)

This website was developed by a subgroup of the [Digital Resource Committee \(DRC\)](#) of the [North American Coordinating Council on Japanese Library Resources \(NCC\)](#) to help identify and promote notable Japanese Studies collections held in North American libraries and other cultural institutions. Drawing on data originally compiled by NCC's [Cooperative Collection Development Working Group \(CCDWG\)](#), this website takes steps towards building a comprehensive database that charts all print and digital materials including unprocessed or partially processed collections. For more information, go to the [project page](#).

If you have a disability and experience difficulty accessing this site, please contact Yukari Sugiyama at [yukari.sugiyama@yale.edu](mailto:yukari.sugiyama@yale.edu)

## HOW TO USE

Home - This landing page contains a map that charts Japanese collections in North America and allows users to locate institutional holdings at a glance. When hovering over each of the red markers, a tooltip is displayed with corresponding institution names, addresses, and collections. For more detailed information about the collections or institutions, go to "Browse Collections" or "Directory" instead.

Collection Overview - This page provides a quick overview of the various library collections covered in this database. The filtering buttons on the left allow users to create data visualizations based on language, access options, collection format, and time period. To clear all filters, use the reset button in the header. Each filter consists of one or more criteria, and multiple criteria can be combined.

Browse Collections - This page provides more detailed information about each collection including collection names, formats, descriptions, languages, time periods, access options, holding institutions, and related URL addresses. Filter the collection by using the dropdown options within the categories at top. To clear all filters, use the reset button in the header. Again, multiple criteria can be combined.

Directory - Please use this page to find the contact information for each of the collection's holding institutions.

## ACKNOWLEDGEMENT

The membership of DRC's Dashboard Subgroup include:

- Yukari Sugiyama, Librarian for Discovery and Metadata Assessment, Yale University
- Dr. Ann Marie Davis, Associate Professor and Japanese Studies Librarian, The Ohio State University
- Katherine Matsuura, Japan Digital Scholarship Librarian, Harvard University

This website was inspired by George Washington University's "[Digital Collections for Chinese Studies](#)" project led by Dr. Yan He, China Documentation Center Librarian, and Dr. Ann James, Data Science Librarian. We would like to thank CCDWG, Dr. Paula Curtis, and everyone who contributed to this project during the early stage of development.

## CONTACT

To nominate similar collections that do not yet appear on this site, or to edit information of existing collections, please use [this form](#).

We welcome your feedback. If there is any questions, comments, or suggestions to share, please email Yukari Sugiyama at [yukari.sugiyama@yale.edu](mailto:yukari.sugiyama@yale.edu)

If you have a disability and experience difficulty accessing this site, please contact Yukari Sugiyama at [yukari.sugiyama@yale.edu](mailto:yukari.sugiyama@yale.edu)

# Workflow

**Notable Japanese Collections in North America**

Home   [Collection Overview](#)   [Browse Collections](#)   [Directory](#)   [About](#)

[Submit Data!](#)

The purpose of this website is to help scholars and librarians identify notable Japanese Studies collections in North American libraries and cultural institutions. It also serves as a pilot project toward building a comprehensive database that charts all print and digital materials, including unprocessed or partially processed collections, held at North American research organizations.

Map   Satellite

Google Looker Studio

Google Analytics

## Submission



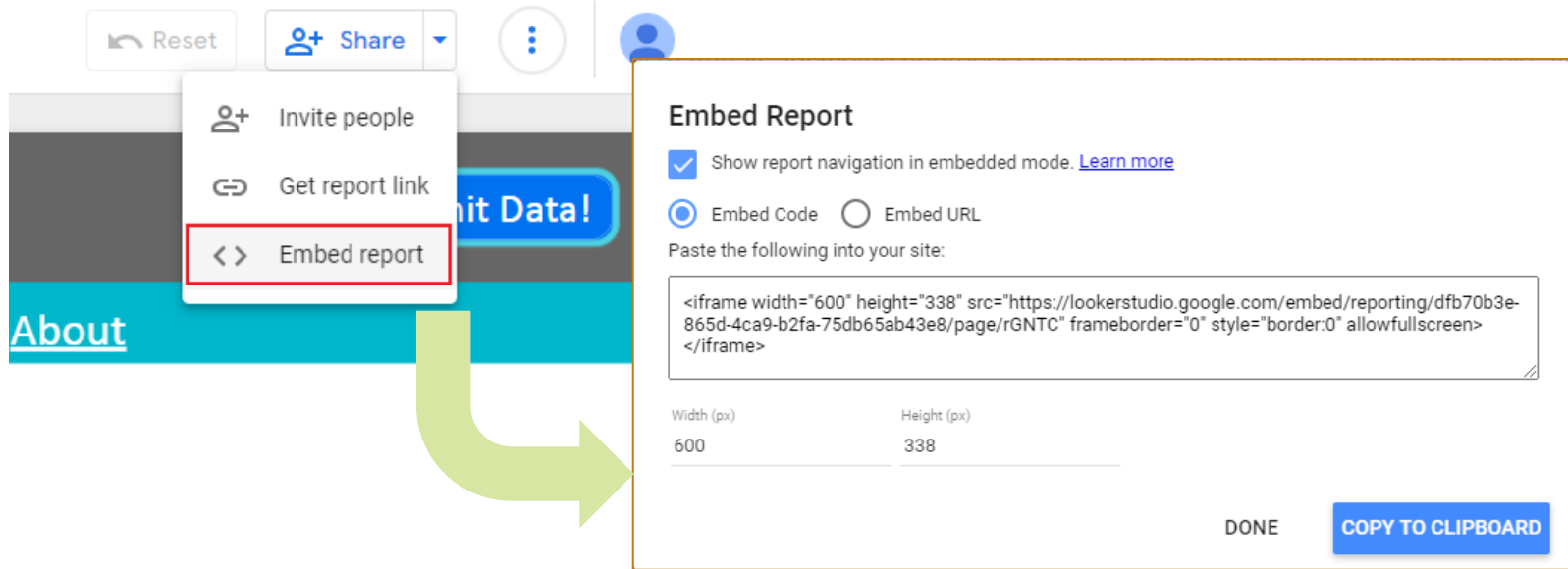
## Response



## Data source



# Embed the Dashboard in Your Page



The image shows a dashboard interface with a share menu open. The 'Embed report' option is highlighted with a red box. A green arrow points from this option to a modal window titled 'Embed Report'. The modal window contains the following information:

**Embed Report**

- Show report navigation in embedded mode. [Learn more](#)
- Embed Code  Embed URL

Paste the following into your site:

```
<iframe width="600" height="338" src="https://lookerstudio.google.com/embed/reporting/dfb70b3e-865d-4ca9-b2fa-75db65ab43e8/page/rGNTC" frameborder="0" style="border:0" allowfullscreen>
</iframe>
```

Width (px)	Height (px)
600	338

DONE [COPY TO CLIPBOARD](#)

Embedded dashboard can be found at  
[https://guides.nccjapan.org/notable\\_collections](https://guides.nccjapan.org/notable_collections)



# Issues and Challenges

## Usability

- Small texts
- Alert for the third-party visualization components

## Accessibility

- Missing critical HTML elements and attributes

## Slow intake of new collections

- Everyone is too busy



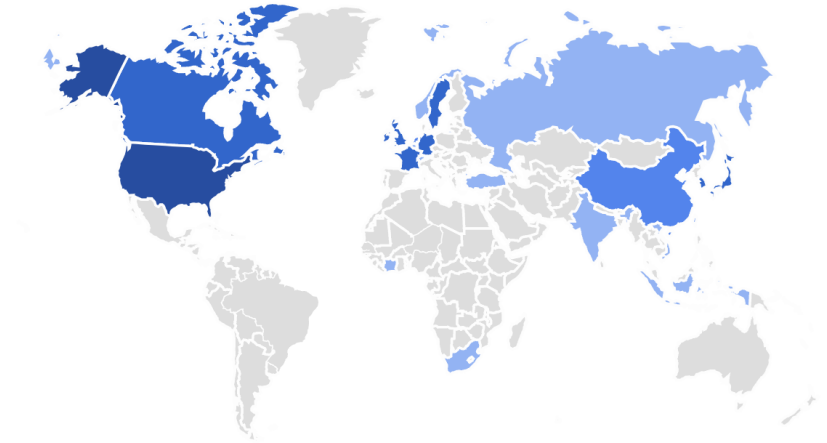
# Outcomes / Impact

## Collections

- 112 → 219

## Google Analytics

- 1,800 visits
- 26 countries



# Use Cases

## Shared Benefits

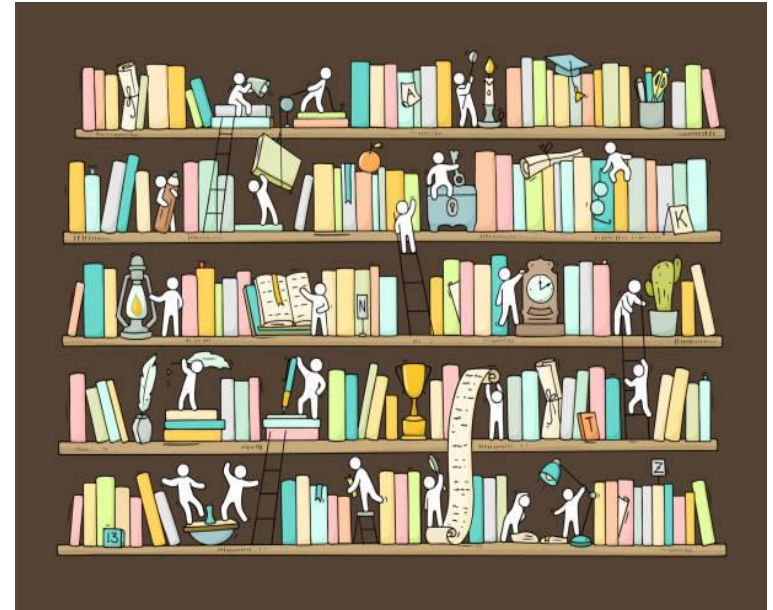
- Removing Barriers
- Collection Visibility

## Researcher's Perspective

- Travel Case

## Librarian Perspectives

- Professional Growth Cases

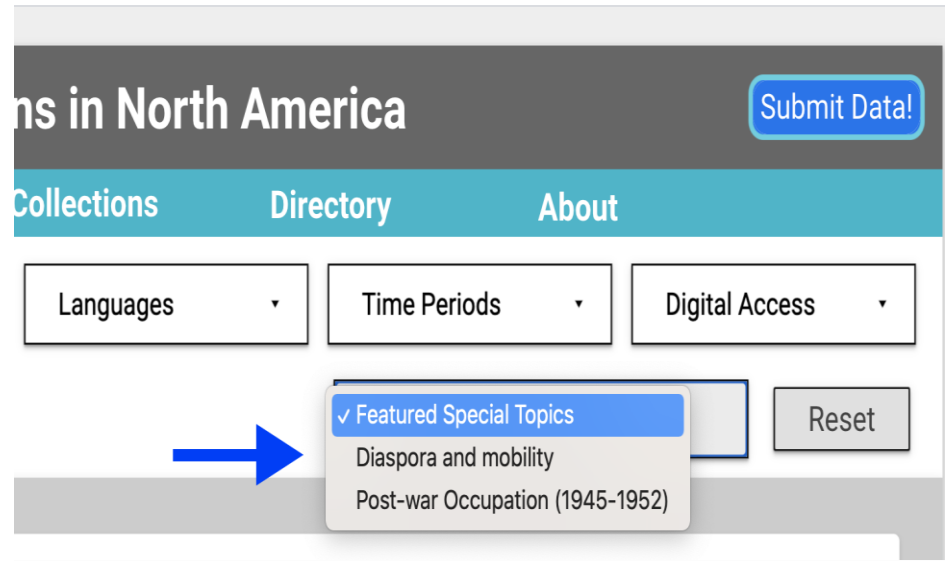


# Strategies for Growth (I)

## Thematic Collaborations

- Postwar Occupation
- Diaspora and Mobility
- Suggestions?

## New Dropdown filter



The screenshot shows a website interface for 'ns in North America'. At the top right is a blue 'Submit Data!' button. Below the title is a teal navigation bar with 'Collections', 'Directory', and 'About' links. Underneath are three dropdown menus: 'Languages', 'Time Periods', and 'Digital Access'. A blue arrow points to a new dropdown menu that is open, showing 'Featured Special Topics' (checked), 'Diaspora and mobility', and 'Post-war Occupation (1945-1952)'. To the right of this menu is a 'Reset' button.



# Strategies for Growth (II)

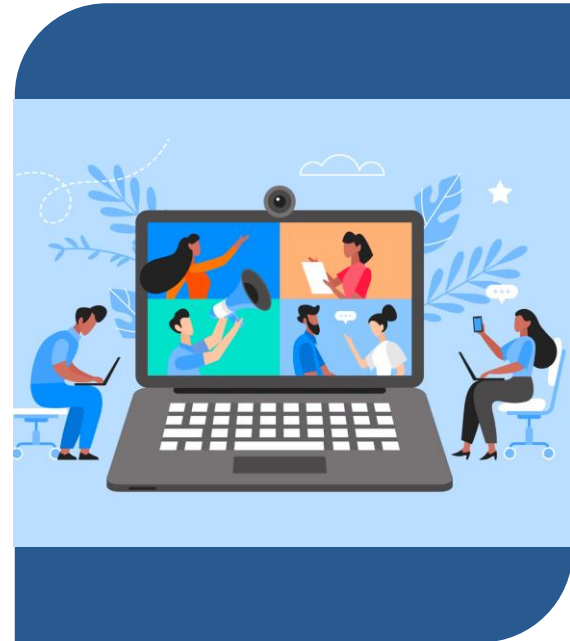
Office Hours & Reminders

Edit-a-thons

- Themed Collections
- Non-NCC Repositories

Invitation-Verification

- Template





## Thank you

Dashboard: <https://tinyurl.com/njcna>

Submission form: <https://forms.gle/2qu7dgdFMnYrFnRW8>

NCC project site: [https://guides.nccjapan.org/notable\\_collections](https://guides.nccjapan.org/notable_collections)

**We welcome your feedback and submissions!**