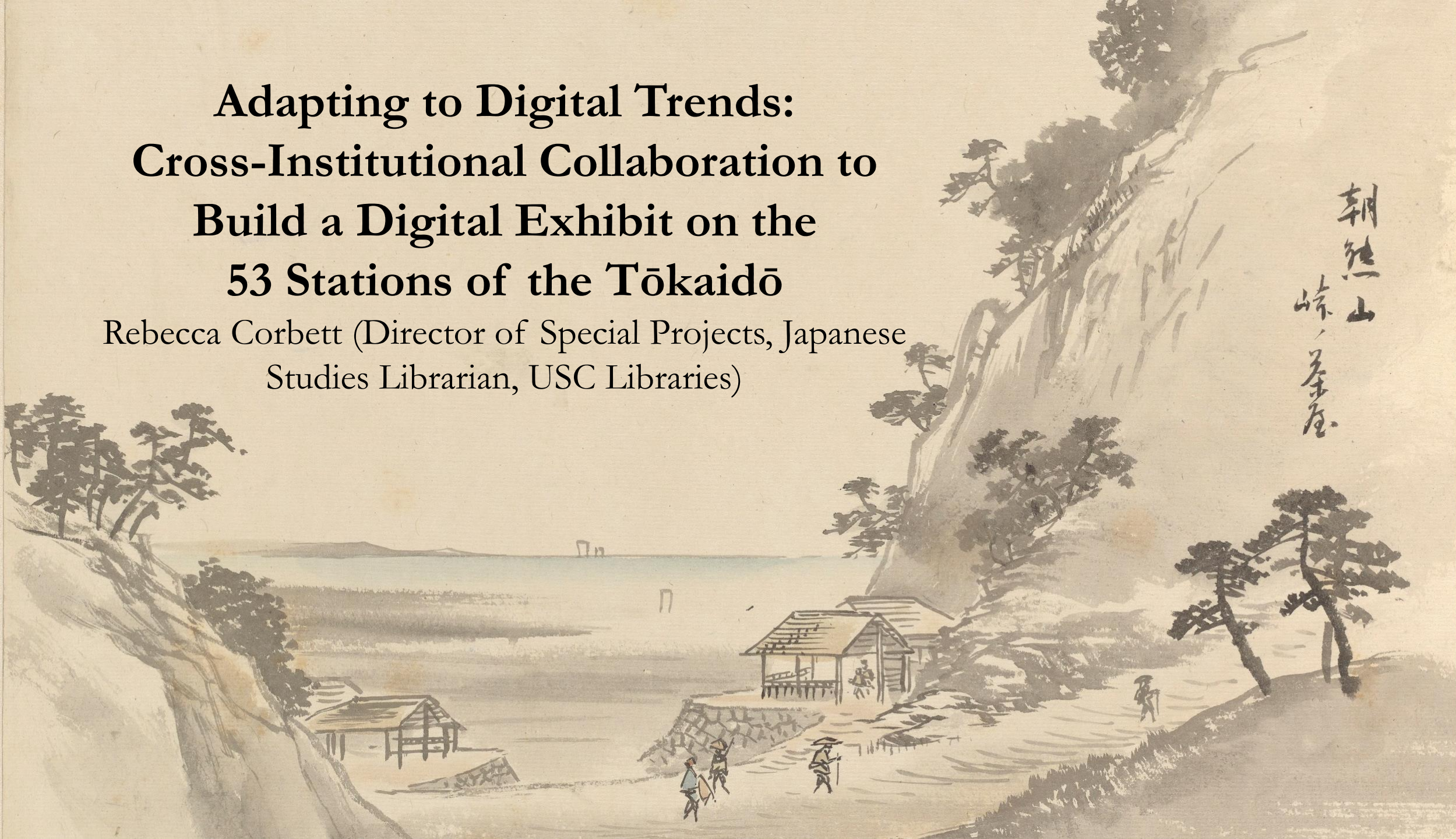


**Adapting to Digital Trends:
Cross-Institutional Collaboration to
Build a Digital Exhibit on the
53 Stations of the Tōkaidō**

Rebecca Corbett (Director of Special Projects, Japanese
Studies Librarian, USC Libraries)



Project Overview and Contributors

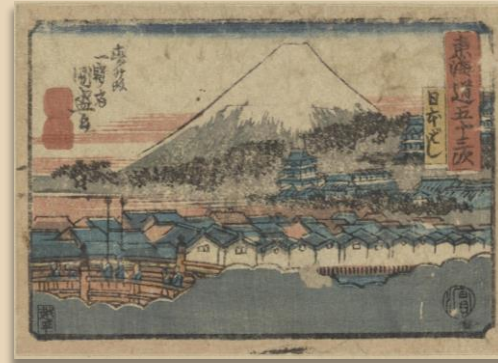
Off the Beaten Path: Alternative Views of the Fifty-Three Tōkaidō Stations



Andō Hiroshige. *Tokaidō gojūsantsugi*
(*Kyōka* edition, ca. 1840)



Ikku Jipensha. *Tokaido*
Gojūsantsugi Kokkei
Hizakurige: Zen (1886)



Various artists. *Tōkaidō meisho zue*
(1797)



Shōrakusai. *Tōkaidō fūkei no zu*
(ca. late-18th c.)



Various artists. *Tōkaidō gojūsantsugi*
manga emaki (ca. late-19th c.)

Librarians

Rebecca Corbett (USC)

Ann Marie Davis (OSU)

Matthew Hayes (Duke)

Metadata/DH Specialists

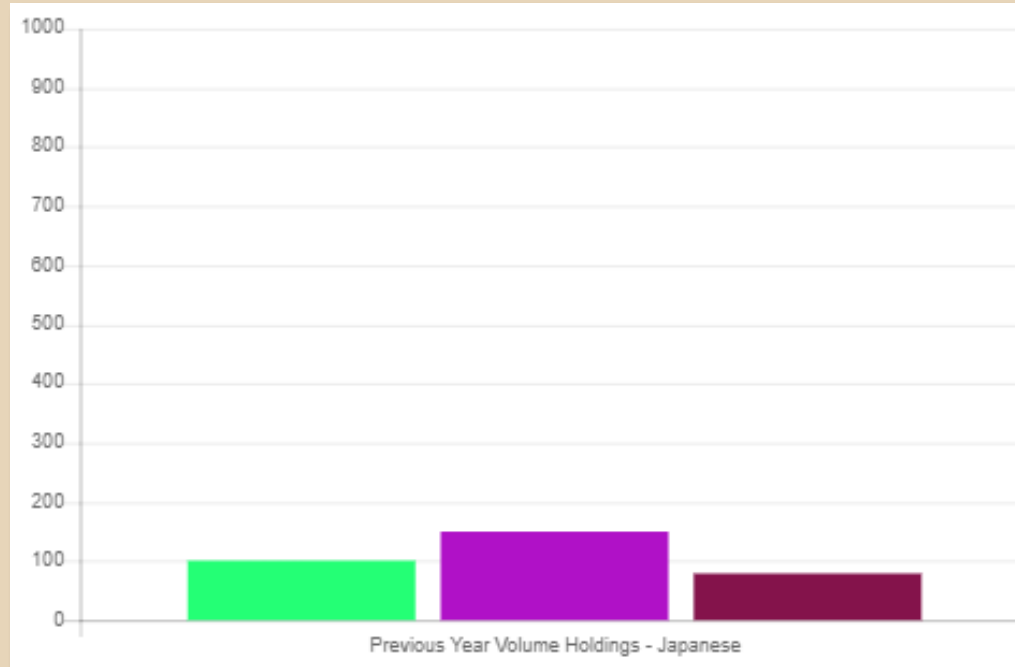
Eric Buckenmeyer (Kennesaw State)

Jesse Drian (USC)

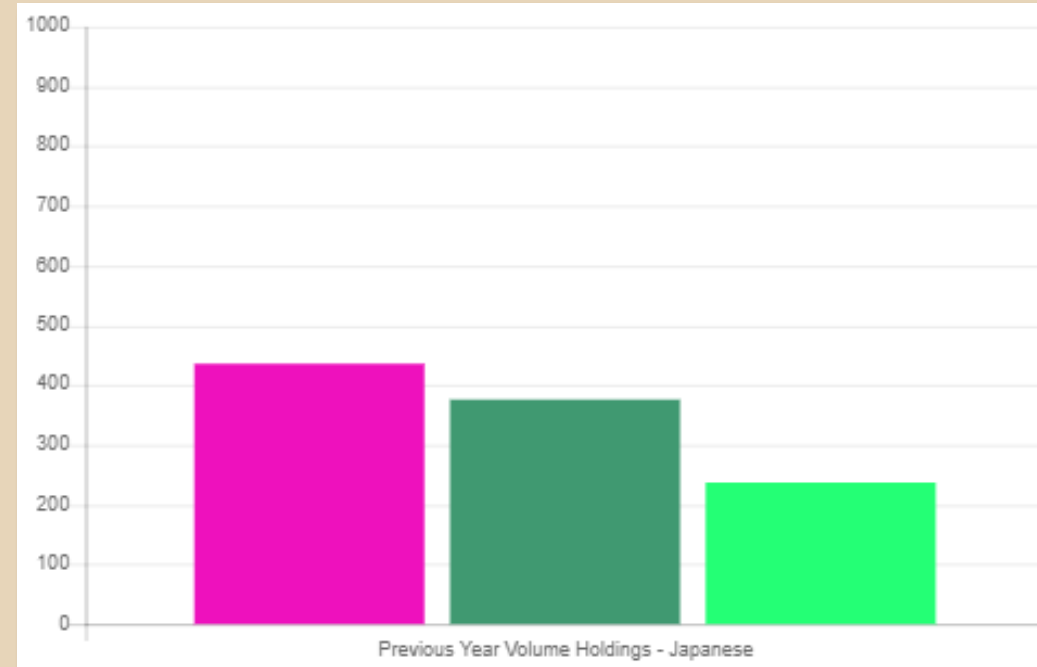
Scalar Developer

Curtis Fletcher (USC)

Collections Scale of Participating Libraries



University	Japanese Holdings 2021
OSU	149,526
Duke	101,423
USC	79,331



University	Japanese Holdings 2021
Berkeley	436,848
Harvard	376,828
Princeton	237,928

Questions

- Materiality/Format
- Geography/Space
- Visuality
- Circulation